

# Jefferson Transit Authority

## Resolution No. 09-06 *Adopting Transit Development Plan 2009 - 2014*

WHEREAS, Jefferson Transit Authority is required to adopt and submit a Six-Year Transit Development Plan to the Washington State Department of Transportation prior to April 1 each year; and

WHEREAS, the Authority has prepared its annual Plan which is attached hereto; and

WHEREAS, a public hearing was held on March 17, 2009 to admit testimony for and against the elements of its Plan; now therefore,


BE IT RESOLVED that the Jefferson Transit Authority Board of Directors does hereby adopt the attached Transit Development Plan 2009 – 2014.

### CERTIFICATION

The undersigned duly qualified Clerk of the Board, acting on behalf of the Jefferson County Public Transportation Benefit Area, certifies that the foregoing is a true and correct copy of a resolution adopted at a legally convened meeting of the Jefferson Transit Authority Board held on this 17<sup>th</sup> day of March 2009.

  
Chair

  
Vice-Chair

  
Member

  
Member

  
Member

Attest:

  
Clerk of the Authority



# **JEFFERSON TRANSIT**

## **Transit Development Plan 2009 – 2014 and 2008 Annual Report**

**Date of Public Hearing: March 17, 2009**

**Jefferson Transit Authority  
1615 West Sims Way  
Port Townsend, WA 98368**

## Table of Contents

| Section | Title  | Page |
|---------|--|------|
| I       | Organization                                     | 3    |
| II      | Physical Plant                                   | 3    |
| III     | Service Characteristics & Fare Structure         | 3    |
| IV      | Service Connections                              | 4    |
| V       | Activities in 2008                               | 5    |
| VI      | Proposed Action Strategies and Goals 2009 - 2014 | 6    |
| VII     | Proposed Changes, 2009-2014                      | 9    |
| VIII    | Capital Improvement Program, 2009 - 2014         | 16   |
| IX      | Operating Data, 2009 - 2014                      | 17   |
| X       | Operating Revenues and Expenditures, 2009 - 2014 | 19   |

### Appendix List

Organization Chart  
Rolling Stock Inventory  
Equipment Inventory  
Facilities Inventory  
Route Maps and Schedules



**Section I: Organization**

Jefferson Transit is a public transportation benefit area (PTBA) authorized under Section 36.57A RCW. Established in 1980 with a voter-approved 0.3 percent sales tax, Jefferson Transit began revenue service in eastern Jefferson County in May, 1981 and along the Pacific Ocean coast in January, 1995. In September of 2000, Jefferson County voters approved an additional 0.3 percent sales tax, for a total of 0.6 percent.

The Jefferson Transit Authority Board of Directors is comprised of all three Jefferson County Commissioners and two City of Port Townsend Council members. Board meetings are held the third Tuesday of each month.

As of December 31, 2008, Jefferson Transit employed 41.16 Full Time Equivalent Employees, with a head count of 47 people.

| Department                    | Head Count | FTE (based on 40 hour week) |
|-------------------------------|------------|-----------------------------|
| Operations Fixed route        | 19         | 15.28                       |
| Operations Dial-a-ride        | 4          | 4                           |
| Operations JTOC               | 4          | 2.92                        |
| JTOC Mgmt                     | 1          | .6                          |
| Dispatch                      | 4          | 3.96                        |
| Vehicle Maintenance           | 4          | 3.87                        |
| Non-Vehicle Maintenance       | 3          | 3                           |
| Operations & Maintenance Mgmt | 2          | 1.8                         |
| General                       | 2          | 1.83                        |
| General Mgmt                  | 4          | 3.9                         |

**Section II: Physical Plant**

Jefferson Transit’s administrative offices, maintenance and operations facilities are located at 1615 W. Sims Way, Port Townsend. Jefferson Transit also owns and operates a 270-space park & ride lot and transit center on the outskirts of downtown Port Townsend. The Appendix contains additional detailed information on all of Jefferson Transit’s owned and contracted revenue vehicles and facilities.

**Section III: Service Characteristics & Fare Structure**

Jefferson Transit provides a variety of public transportation services that include fixed-route, route deviation, vanpool, ride-matching, community van, regional and intercity bus connections. In 2008, eight fixed routes operated Monday through Friday from approximately 6:00 a.m. to 8:00 p.m.; all fixed routes operated on Saturdays and five on Sundays. Jefferson Transit also operated fixed-route route-deviated service south of Highway 104 in eastern Jefferson County and between Forks and Amanda Park in western Jefferson County Monday through Saturday.

ADA paratransit service, Dial-A-Ride, is provided by Jefferson Transit staff and vehicles. Service levels and geographic coverage provide full compliance with federal ADA complementary paratransit regulations and go beyond ADA requirements with one-day per week service to the Kala Point and Cape George areas.

**Fare Structure for Jefferson Transit at 2008 year-end:**

|                      | <u>East<br/>Jefferson</u> | <u>West<br/>Jefferson</u> |
|----------------------|---------------------------|---------------------------|
| Monthly Passes:      |                           |                           |
| Adult                | \$20                      | \$15                      |
| Reduced Fare*        | \$10                      | \$ 7                      |
| College<br>(quarter) | \$40                      | \$30                      |
| Summer Youth         | \$10                      | \$ 10                     |

**East Jefferson County**

Adult Fare: \$1.25 (Includes day pass)  
Reduced Fare\*: \$.75 (Includes day pass)  
Dial-a-Ride: \$1.00 per trip  
One-ride punch pass, Adult: \$6:50 for 10 trips  
One-ride punch pass, Reduced Fare: \$4:50 for 10 trips

**Jefferson Transit Olympic Connection (West Jefferson County)**

Adult Fare 1-way: \$.50  
Adult Fare day pass: \$.75  
Reduced Fare\*: \$.25

\*Reduced Fares are available for people with disabilities, youth 18 years and under, adults 60 years and older

Under review and comment for 2009 is a fare increase for East Jefferson service.

**Section IV: Service Connections**

Jefferson Transit’s circulator buses in Port Townsend provide frequent connecting service to the Port Townsend/Keystone ferry terminal, seven days a week. Fixed-route connections are made with Kitsap Transit six days a week in Poulsbo (was seven days per week until Kitsap cut Sunday service in February 2009) and with Clallam Transit in Sequim six days a week. Connecting service with Mason Transit in Brinnon is available Monday through Friday. Connections between Grays Harbor Transit and Clallam Transit, via Jefferson Transit, are provided Monday through Saturday between Forks and Amanda Park in western Jefferson County.

Regular fixed-route service is coordinated to provide service to the Port Townsend public schools, Chimacum High School, Quilcene High School and to Peninsula College in Port Townsend and Port Angeles (via Clallam Transit), as well as Washington State University Cooperative Extension in Port Hadlock.

Jefferson Transit’s Haines Place Park & Ride/Transit Center in Port Townsend serves as a connection point for the Olympic Discovery Bicycle and Pedestrian Trail. Jefferson Transit fixed route vehicles are 100% bicycle accessible.

## **Section V: Activities in 2008**

Improve mobility in small urban and rural areas. As part of a new comprehensive service planning effort started in 2008, Jefferson Transit representatives met with people in several Jefferson County communities. Online survey data and customer comments were also gathered to help refine the plan. The plan details are available on the Jefferson Transit Website and are incorporated in the service portion of this document.

2008 represented an unprecedented year of fixed route and route deviated ridership growth for Jefferson Transit, going from 309,040 passenger trips in 2007 to 347,646 in 2008, a 12.5% increase.

Funding from the 0.6% local option sales tax for Jefferson County (0.9% maximum is authorized by State law) along with grants, provided for preserving existing service.

Jefferson Transit continued to work closely with the Peninsula Regional Transportation Planning Organization and the Workfirst Local Planning Area.

### **In 2008, Jefferson Transit accomplished the following objectives:**

- The Port Townsend Chamber of Commerce visitors' center was relocated to Jefferson Transit's Haines Place Park-and-ride.
- Maintained a second tier of Paratransit service, providing once weekly service to ADA eligible passengers residing outside of the ADA mandated service area
- Continued ongoing review of all job descriptions, responsibilities and organizational structure to increase efficiencies.
- Received delivery of a new coach for use in Western Jefferson County.
- Maintained the expansion of fixed route service that began in 2003 in the Port Townsend and Tri-Area.
- Continued to meet Envirostar goals
- Continued to use a Biodiesel at a B5 fuel mix in the Port Townsend based fleet.
- The Citizen Advisory Committee (CAC) was out in the community informing people about Jefferson Transit at several events including the County Fair, the Wooden Boat Festival, and the Food Co-op.

## Section VI: Proposed Action Strategies & Goals, 2009 – 2014

### Goals, Mission and Strategies, 2009 – 2014

Jefferson Transit's actions and strategies over the coming six years will be guided by the organization's mission statement and goals which are consistent with Washington State goals, including personal mobility, working together, finance, economic opportunity, environmental protection, energy conservation and protecting our investments.

Jefferson Transit's Mission is to provide reliable, safe, comfortable public transportation service in Jefferson County that is cost effective, reduces energy consumption and contributes to the cultural and economic betterment of the residents of Jefferson County.

The proposed changes in this plan are action strategies that reflect upon the following state Transportation Service Objectives and Goals.

Goals:

- A. **System Operation & Maintenance:** Jefferson Transit operates effectively, efficiently, and predictably.
- B. **System Preservation:** Jefferson Transit facilities are in sound operating condition.
- C. **Special Needs Transportation:** Jefferson Transit provides all citizens access to basic services.
- D. **Congestion Relief:** Jefferson Transit operates with minimal delay and continual reduction in the societal, environmental, and economic costs of congestion.
- E. **Increased Travel Options:** Travelers have viable alternatives to the privately owned vehicle for their trips.
- F. **Seamless Connections:** Jefferson Transit offers coordinated connections with Mason, Kitsap, Clallam and Grays Harbor Transit systems and the ferry system.
- G. **Continuously Reduce Injuries, Fatalities, & Risks:** Jefferson Transit offers a safe transportation system.
- H. **Increased Security:** Customers are safe and secure while using the transportation system.
- I. **Effective Community-based Design:** Jefferson Transit works closely with city and county agencies to promote integrated community design, land use, and transportation investments that improve the quality of life. In addition, Jefferson Transit will work to secure appropriate mitigations (shelters, pullouts, fee in lieu of, etc.) from land use development.
- J. **Collaborative Decision Making:** Collaboration occurs among federal, Tribal, state, regional, local, and private sector partners.
- K. **Support General Economic Prosperity:** Jefferson Transit supports general economic prosperity through a variety of services and regular service.
- L. **Support for Tourism:** Recreational travelers have convenient and inviting access to tourist destinations, including a park and ride facility to allow parking recreation vehicles while visiting historic Port Townsend.
- M. **Maintain Air Quality:** Transportation services and facilities help maintain air quality by meeting air quality health standards. Jefferson Transit will continue to search for technologies and or fuels that will reduce emissions. (Jefferson Transit currently uses a B5 Biodiesel fuel in our Port Townsend based fleet to improve air quality emissions.)
- N. **Meet Water Quality Standards:** Jefferson Transit services and facilities help maintain water quality by meeting water quality standards.

- O. **Reuse and Recycle Resource Materials:** Jefferson Transit services and facilities prudently use, reuse, and recycle resource materials. Jefferson Transit is proud to have been awarded a 5-star Envirostar rating in Jefferson County. Jefferson Transit views sustainability as an important element of design criteria for transit facilities and plans to incorporate Leadership in Energy and Environmental Design (LEED) and other green building design standards as appropriate in the new maintenance / operations facility.
- P. **Service Marketing and Public Involvement:** Keep the public informed regarding transit operations and policies and encourage community involvement. Rigorously promote and market the use of transit services. Continuously work to increase system ridership.

**Preserve and improve existing public transportation service levels.** Several strategies are described that are intended to make our local, state and federal resources go further in maintaining current service levels.

These include:

1. Maximize efficiency of revenues;
2. Study need for increase in sales tax revenues.
3. streamline paratransit operations in order to provide additional trips using existing resources;
4. implement new services via grant funding as such funding becomes available;
5. expand transit services to non-traditional customers via programs such as community vans and flex-cars.
6. Continually re-evaluate Jefferson Transit's goals and establish measurable objectives by which the achievement of those goals may be assessed.

Efforts will continue to identify and secure outside funding sources for ongoing operation of the West Jefferson fixed-route-deviated service and discussions will continue with Port Townsend local agencies for potential merging of facility operations. The plan also calls for a significant service and capital infrastructure expansion in the first half of 2009 to address the closure of the Hood Canal Bridge for span replacement.

Efforts will continue to make the former ACCT planning and Coordinated Human Services Plan activities within the county a reality with Jefferson Transit serving as a lead agency in the implementation of mobility management and other recommendations.

#### **Human Services Planning and Coordination**

Jefferson Transit will continue to work towards optimal Human Services Transportation Coordination through the establishment of a locally developed, coordinated public transit-human services transportation plan for all FTA human services transportation programs. Jefferson Transit will continue to work closely with local human-service agencies, the Peninsula Region Transportation Planning Organization (PRTPO), WSDOT and other transit agencies to implement this plan.

**Preserve and improve existing public transportation facilities and equipment.** For the period 2009-2014, Jefferson Transit plans to seek funding to assist in the replacement or refurbishment of our fleet as illustrated in Section VII, Rolling Stock. Jefferson Transit will continue to provide preventive maintenance on its operations base and its Park & Ride facility, as well as replacing office and maintenance equipment to maintain industry standards.

In addition, Jefferson Transit will continue discussion with elected representatives to secure additional funding to construct a new operating facility designed to accommodate future growth and service requirements.



**Improve mobility in small urban and rural areas.** As part of an ongoing comprehensive service planning effort, Jefferson Transit will continue investigating opportunities for such enhancements as: Incremental service improvements planned for the Tri-Area (Port Hadlock, Irondale and Chimacum) in South Jefferson County, and to North Kitsap County.

Jefferson Transit will continue to be actively involved with local committees to identify service strategies and coordination for special needs populations and will continue to seek funding from the Agency Council on Coordinated Transportation (ACCT), Mobility Management, etc.

**Integrate public transportation services into a coordinated system linked by intermodal facilities.** Jefferson Transit's six-year planning horizon includes new park and ride and transfer facilities for connections with other transportation providers and transits, for example, a transfer center in Tri-Area/Port Ludlow to improve efficiency of Jefferson Transit county routes and potential service to Kitsap Transit's intermodal facility in Kingston. If long-term funding for the operation of West Jefferson transit service is secured, the plan calls for development of a transfer center in Amanda Park with Grays Harbor Transit.

Jefferson Transit plans to participate in a partnership to provide land-based transportation to and from passenger-only ferry service from Port Townsend/Port Hadlock to Kitsap County and/or Seattle sometime within the course of the next six years.

### **Reduce SOV Use and Implement Commute Trip Reduction Methods**

We will consider a variety of methods to use to educate and entice single occupancy vehicle drivers to take the bus – at least once in a while! Some ideas include:

- Interactive incentives such as a raffle of goods and services – this might be more appealing than a direct cash incentive.
- Initiate service that could provide incentive for riders to try transit instead of SOV. It could be intensive once-a-week service in a particular area.
- Offer a free service day or free week to get people to try transit.
- Provide discount passes to downtown employees who use park and ride and take the shuttle to work.
- Develop a Bus Companion /mentor program to help new riders navigate the system.
- Continue to market and expand our Vanpool program.

The proposed changes 2009 – 2014, identified in Section VII, are actions and strategies that reflect upon the state and public transportation goals and policy objectives:

## Section VII 2009-2014 Services, Equipment & Facilities

### Services

#### 2009 Preservation

1. Review funding levels to support services & improvements
2. Ongoing review to coordinate routes within schedule to facilitate transfers
3. Study need for service adjustments
4. Maintain existing services

#### 2009 Expansion

1. Implement recruitment of temporary personnel for Hood Canal Bridge closure
2. Implement plans to mitigate Hood Canal Bridge closure impact
3. Explore ways to expand bicycle-rider options for using transit
4. Provide mobility coordination to special needs passengers
5. Planning
  - Work with developers and local government to add service, shelters, bus pullouts, etc., to new commercial and housing developments as appropriate
  - Continue long-range planning and develop surveys for origination and destination data and to measure customer satisfaction.
  - Develop plan, in partnership with Port Townsend Chamber of commerce, to provide foot ferry service to serve Jefferson County residents and visitors
  - Develop and implement vanpool marketing plan

#### 2010 Preservation

1. Maintain existing services
2. Develop survey and criteria to evaluate existing service
3. Review funding levels to support services & improvements
4. Continue to coordinate routes within schedule to facilitate transfers

#### 2010 Expansion

1. Port Townsend in-town service, Commuter and Connector runs and Marrowstone service
2. Later service in-town and in Tri Area, expand service along Beaver Valley Road, develop a route from West Valley Rd to Egg & I, back to Center Rd, a Tri-area loop & back to PT.
3. Service along Hastings, Jacob Miller Road, Discovery Road and Cape George Rd
4. General public dial-a-ride service, (a combined fixed-route and demand service to serve several communities) or fixed route service to Marrowstone Island and Fort Flagler, Kala Point and Cape George service
5. Develop educational outreach to teach youth and seniors how to use the bus, perhaps partner with health awareness and improvement/education programs
6. Plan improved access to Senior Meals and services, expand paratransit service beyond ADA requirements
7. Ride Share – Actively participate in the Puget Sound Region's Rideshareonline.com project and expand vanpool marketing efforts and Study Flex-Car/truck feasibility
8. Evaluate needs for connection to Kingston Ferry and Olympic College – Poulsbo campus.
9. Review service needs of Peninsula College at Fort Worden

10. Plan a green bike program, providing loaner bikes for use around town.
11. Plan Jefferson Transit Pedit-cab program.
12. Explore ways to expand bicycle-rider options for using transit
13. Misc
  - Saturday garage-sale bus
  - Summer express service, 3 times daily, between Fort Worden and Park and Ride
  - Sunday morning service to help people get to early church services
  - Service to the food bank and Goodwill store in Port Townsend
  - Saturday evening shuttle for monthly arts walk
  - Prepare to serve the industrial park off of Howard Street when traffic control / round-about is installed
  - System wide Sunday Service
14. South County Service
  - Service to access the Toandos Peninsula (Dabob Rd.)
  - Service to Coyle and other remote areas. Perhaps use a van-pool type service model
  - Closer connections from Brinnon to Kitsap County and Brinnon to Clallam County that do not require traveling in to the Tri-Area. Perhaps have Sequim to Highway 104 to connect with Brinnon Service.
15. Jefferson Transit Olympic Connection - earlier fixed route to Lake Quinault and for summer service to Upper Hoh Rd. to ranger station, Sunday service to connect with Grays Harbor, Summer service to trailheads
16. Clallam County Connections - Expand service to Sequim to make transportation to Victoria easier, perhaps seasonally and/or less frequently than every day
17. Kitsap County Connections
  - Add service for Kingston passenger ferry service connections, from Port Townsend directly to the Kingston Ferry
  - Service for Poulsbo branch of Olympic College (and evaluate service change for transfer to Kitsap Transit to Bainbridge ferry at Olympic College)
  - Direct Service to and from Bainbridge to Seattle ferry
  - Add later Weekend service to/from Poulsbo & re-instate Sunday if Kitsap Transit does
18. Regional Connections
  - Regional transit service between Clallam and Kitsap County – Bainbridge Island or Kingston
  - Sequim to Poulsbo & Silverdale (direct express), perhaps one day a week
  - Link up with regional effort to provide seamless transportation from Canada to southern Oregon
  - Streamline transportation from Port Townsend to SeaTac airport, add an express trip once or twice a week
19. Coordinate fixed route service to provide connections to travelers who arrive or depart Jefferson County on ferry service, both private carriers and the ferry system
20. Planning
  - Work with developers and local government to add service, shelters, bus pullouts, etc., to new commercial and housing developments as appropriate
  - Continue long-range planning and develop surveys for origination and destination data and to measure customer satisfaction.
  - Secure funding for transportation studies to review ongoing need for contraction or expansion of service

**2011 Preservation**

1. Review funding levels to support services & improvements
2. Ongoing review to coordinate routes to facilitate transfers
3. Maintain existing services

**2011 Expansion**

1. Implement plan, in partnership with Port Townsend Chamber of commerce, to provide foot ferry service to serve Jefferson County residents and visitors
2. Explore ways to expand bicycle-rider options for using transit
3. Planning (see #20 year 2010)

**2012 Preservation**

1. Review funding levels to support all services & improvements
2. Ongoing review to coordinate routes to facilitate transfers
3. Maintain existing services

**2012 Expansion**

1. Pedi-cab service in Port Townsend
2. water-taxi ferry service between Port Hadlock, Marrowstone, Port Townsend, Port Ludlow
3. Planning (see #20 year 2010)

**2013 Preservation**

1. Review funding levels to support all services & improvements
2. Ongoing review to coordinate routes to facilitate transfers
3. Maintain existing services

**2014 Preservation**

1. Review funding levels to support all services & improvements
2. Ongoing review to coordinate routes to facilitate transfers
3. Maintain existing services

## Facilities 2009-2014

### 2009      **Preservation**

- Continue use of Envirostar practices
- Preserve Transit Base
- Preserve Passenger Amenities and Services

### 2009      **Expansion**

- Plan Park & Ride network between Tri-area, Port Ludlow and Highway 104
- Study need for West Jefferson transit center
- Work with Chamber of Commerce to plan for staff use of Visitor's Center facility

### 2010      **Preservation**

- Continue use of Envirostar practices
- Preserve Transit Base
- Preserve Passenger Amenities and Services

### 2010      **Expansion**

- Add 3 shelters and 3 i-stops  
Possible locations: New Developments, Frontier Bank, Swansonville Road, near Toandos Peninsula (Dabob Rd.) to encourage carpools or park & ride options, Port Ludlow, Tyler & Washington, Umatilla & San Juan, Brinnon Store, Quilcene, 4-Corners Store, McPherson & 14<sup>th</sup>, Sheridan & Hastings, JTOC: add I-Stop Light and bus shelter at Cedar Creek, Lower Hoh Tribal Center, Amanda Park Mercantile
- Complete design and begin construction of Op/Mtc/Admin facility
- Enhance Haines Place Park & Ride facility along with partner(s)  
Install Bike storage / locker, improve RV access, add low-output public radio service, re-stripe for parking as well as ingress and egress. Provide Electric car plug ins, trailhead kiosk/connection to Kah Tai Park and Larry Scott Trail, latte stand, Wi-fi hot spot, ticket booth for local events and luggage lockers, upgrade shelters to improve wind and rain coverage at Park & Ride. Post fare information on permanent signs, add a clock, provide driver & public restrooms, provide space for JTA office and customer service staff use.
- Enhance local park and ride areas (public and those owned by private parties) with shelters, ADA surfaces, etc.
- Plan to add park and ride areas through public / private partnerships in the following areas:  
Dabob Road to serve the Toandos Peninsula  
New transit facility building site  
104 and 19  
104 and Hood Canal Bridge  
101 in Quilcene  
Hadlock Chimacum areas, perhaps HJ Carroll Park, Chimacum Light
- Add park and ride improvements where possible that serve the needs of the community (food bank, day care, street food); partner with churches and other organizations as appropriate
- Plan & design West Jefferson transit center, including Maintenance & shop &

## Facilities 2009-2014

- covered parking, partner with Clallam Transit & Jefferson County
- West Jefferson: Add updated wash pad with bright lighting for nighttime cleaning of buses
- Plan Transfer center at Brinnon

### 2011 Preservation

- Continue use of Envirostar practices

### 2011 Expansion

- Complete Op/Mtce/Admin facility construction
- Add 3 shelters and 3 i-stops

### 2012 Preservation

- Continue use of Envirostar practices

### 2012 Expansion

- Add 3 shelters and 3 i-stops
- Construct park & ride network in Tri-Area/Port Ludlow
- Construct West Jefferson transfer center

### 2013 Preservation

- Continue use of Envirostar practices

### 2013 Expansion

- Add 3 shelters and 3 i-stops

### 2014 Preservation

- Continue use of Envirostar practices
- 

### 2014 Expansion

- Add 1 shelters and 1 i-stop

## Equipment – Rolling Stock

Note: heavy-duty buses are also referred to as large transit coaches and light-duty coaches are also referred to as mid-sized cutaway and mini-buses in various publications

### 2009 Preservation

- replace 2 heavy-duty buses
- replace 2 light-duty coaches

### 2009 Expansion

- add 4 vanpool vans

- 2010      Preservation**
  - replace 2 heavy duty buses
  - replace 2 light-duty coaches
  
- 2010      Expansion**
  - add 2 vanpool vans
  - Acquire Electric Car for staff use (shelter checks, schedule distribution, mail runs, etc)
  - Acquire 4 wheel drive operations vehicle
  
- 2011      Preservation**
  - replace 2 heavy-duty buses
  - replace 2 light-duty coaches
  
- 2011      Expansion**
  - add 2 vanpool vans
  
- 2012      Preservation**
  - Replace 1 heavy-duty coach
  
- 2012      Expansion**
  - Add 2 vanpool vans
  
- 2013      Preservation**
  - replace 4 vanpool vans
  
- 2013      Expansion**
  - add 1 light-duty coach
  - add 2 vanpool vans
  
- 2014      Preservation**
  - replace 1 heavy-duty coach, replace 2 vanpool vans
  
- 2014      Expansion**
  - add 1 light-duty coach

## **Equipment – Other than Rolling Stock**

### **2009 Preservation**

- Develop Administration Training Program
- Continue to update look of fleet
- Preserve Transit Base
- Preserve Passenger Amenities and Services

### **2009 Expansion**

- See Facilities section
- Replace radio system, include West Jefferson service
- Upgrade Community Van Defensive Driving Course material and computer

### **2010 Preservation**

- Preserve Transit Base
- Preserve Passenger Amenities and Services

### **2010 Expansion**

- Add vehicle location capability to radio system & fleet
- Add test computer to trial run applications for viability/value/compatibility
- Replace and upgrade ridership and timecard database software

### **2011 Preservation**

- Preserve Transit Base
- Preserve Passenger Amenities and Services
- Replace Fare boxes

### **2011 Expansion**

- Upgrade web & phone system to provide auto call taking for Dial-a-Ride, trip planning & other interactive features
- Acquire Water Taxi / Ferry Boat

### **2012 Preservation**

- Replace and Update as required

### **2012 Expansion**

- Acquire Water Taxi / Ferry Boat

### **2013 Preservation**

- Replace and Update as required

### **2014 Preservation**

- Upgrade computer software versions

### **2014 Expansion**

- Integrate interactive bus stops



# Section VIII: Capital Improvement Program

2009-2014

|   | 2009               | 2010               | 2011               | 2012               | 2013             | 2014             |
|---|--------------------|--------------------|--------------------|--------------------|------------------|------------------|
| <b>Preservation</b>   |                    |                    |                    |                    |                  |                  |
| Transit Base Preserve & upgrade                                     | 488,000            | 141,000            |                    |                    |                  |                  |
| Passenger Amenities & Services                                      | 40,000             | 97,650             |                    |                    |                  |                  |
| Maintain Equipment  | 35,000             | 35,000             | 35,000             | 40,000             | 40,000           | 40,000           |
| Light-duty coaches  | 240,000            | 240,000            | 240,000            |                    | 120,000          |                  |
| notes   | 2 @ 120,000        | 2 @ 120,000        | 2 @ 120,000        |                    | 1 @ 120,000      |                  |
| Heavy-duty Coaches  | 770,000            | 770,000            | 800,000            | 400,000            |                  | 400,000          |
| notes   | 2 @ 385,000        | 2 @ 385,000        | 2 @ 400,000        | 1 @ 400,000        |                  | 1 @ 400,000      |
| Vanpool vans  |                    |                    |                    |                    | 104,000          | 52,000           |
| notes   |                    |                    |                    |                    | 4 @ 26,000       | 2 @ 26,000       |
|   |                    |                    |                    |                    |                  |                  |
| <b>Preservation Totals</b>  | <b>\$1,625,000</b> | <b>\$1,283,650</b> | <b>\$1,075,000</b> | <b>\$440,000</b>   | <b>\$264,000</b> | <b>\$492,000</b> |
|   |                    |                    |                    |                    |                  |                  |
| <b>Expansion</b>  |                    |                    |                    |                    |                  |                  |
| Replace radio system  | 150,000            |                    |                    |                    |                  |                  |
| Light-duty coaches  |                    |                    |                    |                    | 120,000          | 120,000          |
| notes   |                    |                    |                    |                    | 1 @ 120,000      | 1 @ 120,000      |
| Headquarters Ops/Maint/Admin  |                    | 750,000            | 4,000,000          | 6,000,000          |                  |                  |
| west Jefferson transit Center                                       |                    | 40,000             |                    | 300,000            |                  |                  |
| Tri-area / Port Ludlow park & ride                                  |                    |                    |                    | 300,000            |                  |                  |
| Enhance Haines Place park & ride                                    | 100,000            | 150,000            |                    |                    |                  |                  |
| Enhance local park & ride areas                                     |                    | 50,000             |                    | 100,000            |                  |                  |
| Transit Shelters & istops   |                    | 15,000             | 15,000             | 15,000             | 15,000           | 5,000            |
| service improvements, phone & web updates, interactive stops)       |                    |                    | 100,000            |                    |                  | 100,000          |
| Vanpool vans  | 104,000            | 52,000             | 52,000             | 52,000             | 52,000           |                  |
| notes   | 4 @ 26,000         | 2 @ 26,000         | 2 @ 26,000         | 2 @ 26,000         | 2 @ 26,000       |                  |
| Add water taxi (lease)  |                    |                    | 100,000            | 100,000            |                  |                  |
| Add alter-fuel vehicles (pedicabs, electric car) & 4wdr Ops vehicle |                    | 45,000             |                    | 15,000             |                  |                  |
| Replace Fare boxes  |                    |                    | 200,000            |                    |                  |                  |
| <b>Expansion Totals</b>   | <b>\$354,000</b>   | <b>\$1,102,000</b> | <b>\$4,467,000</b> | <b>\$6,882,000</b> | <b>\$187,000</b> | <b>\$225,000</b> |
|   |                    |                    |                    |                    |                  |                  |
| <b>Total Capital</b>  | <b>\$1,979,000</b> | <b>\$2,385,650</b> | <b>\$5,542,000</b> | <b>\$7,322,000</b> | <b>\$451,000</b> | <b>\$717,000</b> |

## Section IX: Operating Data

|                         |         | 2008    | 2009    | 2010    | 2011    | 2012    | 2013    | 2014    |
|-------------------------|---------|---------|---------|---------|---------|---------|---------|---------|
| <b>Fixed-Route</b>      | growth  |         |         | plus 1% | plus 1% | plus 2% | plus 2% | plus 2% |
| Revenue Hours           |         | 17,760  | 17,760  | 17,938  | 18,117  | 18,479  | 18,849  | 19,226  |
| Total Vehicle Hours     |         | 18,115  | 18,115  | 18,296  | 18,479  | 18,849  | 19,226  | 19,610  |
| Revenue Miles           |         | 384,223 | 384,223 | 388,065 | 391,946 | 399,785 | 407,780 | 415,936 |
| Total Vehicle Miles     |         | 387,527 | 387,527 | 391,403 | 395,317 | 403,223 | 411,287 | 419,513 |
| Passenger Trips         | plus 5% | 248,540 | 260,967 | 274,016 | 287,716 | 302,102 | 317,207 | 333,068 |
| Fatalities              |         | 0       |         |         |         |         |         |         |
| Reportable Injuries     |         | 0       |         |         |         |         |         |         |
| Collisions              |         | 1       |         |         |         |         |         |         |
| Gasoline                |         | 0       | 0       | 0       | 0       | 0       | 0       | 0       |
| Biodiesel Fuel Consumed |         | 67,622  | 67,622  | 68,298  | 68,981  | 70,360  | 71,768  | 73,203  |
| Diesel Fuel Consumed    |         | 0       | 0       | 0       | 0       | 0       | 0       | 0       |
|                         |         |         |         |         |         |         |         |         |
|                         |         |         |         |         |         |         |         |         |
| <b>Route-Deviated</b>   |         |         |         | plus 1% | plus 1% | plus 2% | plus 2% | plus 2% |
| Revenue Hours           |         | 6,444   | 6,444   | 6,508   | 6,574   | 6,705   | 6,839   | 6,976   |
| Total Vehicle Hours     |         | 6,573   | 6,573   | 6,639   | 6,705   | 6,839   | 6,976   | 7,115   |
| Revenue Miles           |         | 278,220 | 278,220 | 281,002 | 283,812 | 289,488 | 295,278 | 301,184 |
| Total Vehicle Miles     |         | 280,613 | 280,613 | 283,419 | 286,253 | 291,978 | 297,818 | 303,774 |
| Passenger Trips         | plus 5% | 99,106  | 104,061 | 109,264 | 115,274 | 121,037 | 127,089 | 133,444 |
| Fatalities              |         | 0       |         |         |         |         |         |         |
| Reportable Injuries     |         | 0       |         |         |         |         |         |         |
| Collisions              |         | 0       |         |         |         |         |         |         |
| Gasoline                |         | 1,989   | 1,989   | 2,009   | 2,029   | 2,070   | 2,111   | 2,153   |
| Biodiesel Fuel Consumed |         | 22,541  | 22,541  | 22,766  | 22,994  | 23,454  | 23,923  | 24,401  |
| Diesel Fuel Consumed    |         | 12,951  | 12,951  | 13,081  | 13,211  | 13,476  | 13,745  | 14,020  |

Section IX: Operating Data continued

|                                      |  | 2008   | 2009    | 2010    | 2011    | 2012    | 2013    | 2014    |
|--------------------------------------|--|--------|---------|---------|---------|---------|---------|---------|
| <b>Dial-A-Ride</b>                   |  |        |         | plus 1% | plus 1% | plus 2% | plus 2% | plus 2% |
| Revenue Hours                        |  | 7,134  | 7,981   | 8,060   | 8,141   | 8,304   | 8,470   | 8,639   |
| Total Vehicle Hours                  |  | 8,779  | 8,779   | 8,866   | 8,955   | 9,134   | 9,317   | 9,503   |
| Revenue Miles                        |  | 85,656 | 85,656  | 86,513  | 87,378  | 89,125  | 90,908  | 92,726  |
| Total Vehicle Miles                  |  | 98,998 | 109,640 | 110,736 | 111,843 | 114,080 | 116,362 | 118,689 |
| Passenger Trips                      |  | 19,181 | 19,373  | 19,567  | 19,762  | 20,157  | 20,561  | 20,972  |
| Fatalities                           |  | 0      |         |         |         |         |         |         |
| Reportable Injuries                  |  | 0      |         |         |         |         |         |         |
| Collisions                           |  | 1      |         |         |         |         |         |         |
| Gasoline                             |  | 2,371  | 2,513   | 2,538   | 2,564   | 2,615   | 2,667   | 2,721   |
| Biodiesel Fuel Consumed              |  | 6,795  | 6,978   | 7,048   | 7,119   | 7,261   | 7,406   | 7,554   |
| Diesel Fuel Consumed                 |  | 0      | 0       | 0       | 0       | 0       | 0       | 0       |
|                                      |  |        |         |         |         |         |         |         |
|                                      |  |        |         |         |         |         |         |         |
| <b>Vanpools &amp; Community Vans</b> |  | add    | 2 vans  | 2 vans  | 2 vans  | 2 vans  | 2 vans  | 2 vans  |
| Revenue Miles                        |  | 78,640 | 88,000  | 98,000  | 108,000 | 118,000 | 128,000 | 138,000 |
| Total Vehicle Miles                  |  | 78,640 | 88,000  | 98,000  | 108,000 | 118,000 | 128,000 | 138,000 |
| Passenger Trips                      |  | 7,270  | 9,200   | 11,200  | 13,200  | 15,200  | 16,200  | 17,200  |
| Fatalities                           |  | 0      |         |         |         |         |         |         |
| Reportable Injuries                  |  | 0      |         |         |         |         |         |         |
| Collisions                           |  | 0      |         |         |         |         |         |         |
| Gasoline                             |  | 4,303  | 6,000   | 7,000   | 8,000   | 9,000   | 10,000  | 10,000  |
| Biodiesel Fuel Consumed              |  | 0      | 0       | 0       | 0       | 0       | 0       | 0       |
| Diesel Fuel Consumed                 |  | 871    | 900     | 900     | 900     | 900     | 900     | 900     |

## Section X: Operating Revenues & Expenditures, 2009 – 2014

### **Six-Year Budget** ***Assumption Information***

#### General Fund:

- Sales Taxes are assumed at an average 2.5% annual growth - either from increased sales revenues, or from an increase in the tax rate over the next 6 years or a combination of these methods
- All service expansion is funded by at least 75% operating grants and preservation of service by at least 50% operating grant funds
- The Olympic Connection service continues to be funded by grants and contributions from the partnership members, which include Jefferson Transit, Clallam Transit, and the Quinault Indian Nation.

#### Capital Fund:

- New acquisitions and the unfunded portion of replacement acquisitions are funded from grants (at an 80% to 100% level) and the Authority's Reserve for Replacement; no assumption is made for contributions from the operating budget.
- Operations/Maintenance/Administration facility expansion is funded with grants, appropriations, partnerships with other appropriate agencies and entities, and the match of the value of the current facility and property.

Please see the following page for 2008 actual and 2009-2014 budget projections

**Jefferson Transit Authority**  
**Statement of Operating Revenues, Expenses and Nonoperating Revenues**  
**Yearly Comparative for the Year 2008 through 2014**  
**Operating Fund (2008 Actual, 2009 Budget and 2010-2014 Projected)**

|  | BARS   | 2008<br>Actual | 2009<br>Budget | 2010<br>Projected | 2011<br>Projected | 2012<br>Projected | 2013<br>Projected | 2014<br>Projected |
|--|--------|----------------|----------------|-------------------|-------------------|-------------------|-------------------|-------------------|
| <b>OPERATING REVENUES:</b>                   |        |                |                |                   |                   |                   |                   |                   |
| PASSENGER FARES FOR TRANSIT SERVICES         | 401.00 | \$ 205,086     | \$ 218,922     | \$ 221,631        | \$ 224,393        | \$ 227,211        | \$ 230,085        | \$ 233,018        |
| SPECIAL TRANSIT FARES                        | 402.00 | 67,146         | 56,500         | 57,065            | 57,636            | 58,212            | 58,794            | 59,382            |
| CHARTER SERVICE REVENUES                     | 405.00 | 0              | 0              | 0                 | 0                 | 0                 | 0                 | 0                 |
| AUXILIARY TRANSPORTATION REVENUES            | 406.00 | 27,148         | 24,775         | 25,023            | 25,273            | 25,526            | 25,781            | 26,039            |
| Total Operating Revenues                     |        | 299,380        | 300,197        | 303,719           | 307,302           | 310,948           | 314,660           | 318,438           |
| <b>OPERATING EXPENSES:</b>                   |        |                |                |                   |                   |                   |                   |                   |
| LABOR  | 501.00 | 1,648,059      | 1,656,149      | 1,698,749         | 1,742,499         | 1,787,432         | 1,833,579         | 1,880,975         |
| BENEFITS                                     | 502.00 | 1,010,358      | 1,044,950      | 1,103,452         | 1,166,406         | 1,234,207         | 1,307,285         | 1,386,115         |
| SERVICES AND USER FEES                       | 503.00 | 225,798        | 231,195        | 236,803           | 242,630           | 248,686           | 254,982           | 261,526           |
| MATERIALS AND SUPPLIES CONSUMED              | 504.00 | 617,093        | 458,743        | 475,022           | 492,050           | 509,869           | 528,528           | 548,076           |
| UTILITIES                                    | 505.00 | 47,127         | 48,100         | 49,302            | 50,535            | 51,798            | 53,093            | 54,421            |
| CASUALTY AND LIABILITY COSTS                 | 506.00 | 85,757         | 89,105         | 93,560            | 98,238            | 103,150           | 108,308           | 113,723           |
| TAXES  | 507.00 | 6,161          | 6,182          | 6,240             | 6,298             | 6,357             | 6,417             | 6,477             |
| PURCHASED TRANSPORTATION SERVICE             | 508.00 | 0              | 0              | 0                 | 0                 | 0                 | 0                 | 0                 |
| MISCELLANEOUS EXPENSES                       | 509.00 | 50,438         | 51,526         | 52,402            | 53,294            | 54,201            | 55,125            | 56,064            |
| LEASES AND RENTALS                           | 512.00 | 13,236         | 12,935         | 13,064            | 13,195            | 13,328            | 13,462            | 13,597            |
| Total Operating Expenses                     |        | 3,704,027      | 3,598,884      | 3,728,595         | 3,865,146         | 4,009,028         | 4,160,777         | 4,320,974         |
| OPERATING INCOME (LOSS)                      |        | (3,404,647)    | (3,298,687)    | (3,424,876)       | (3,557,844)       | (3,698,080)       | (3,846,117)       | (4,002,536)       |
| <b>NONOPERATING REVENUES (EXPENSES)</b>      |        |                |                |                   |                   |                   |                   |                   |
| NONTRANSPORTATION REVENUES                   | 407.00 | 36,786         | 20,000         | 20,000            | 20,000            | 20,000            | 20,000            | 20,000            |
| TAXES LEVIED DIRECTLY BY TRANSIT SYSTEM      | 408.00 | 2,415,514      | 2,349,495      | 2,408,232         | 2,468,438         | 2,530,149         | 2,593,403         | 2,658,238         |
| LOCAL GRANTS AND CONTRIBUTIONS               | 409.00 | 34,000         | 34,000         | 34,000            | 34,000            | 34,000            | 34,000            | 34,000            |
| STATE GRANTS AND CONTRIBUTIONS               | 411.00 | 283,787        | 268,517        | 271,202           | 273,914           | 276,653           | 279,420           | 282,214           |
| FEDERAL GRANTS AND CONTRIBUTIONS (OPERATING) | 413.00 | 563,804        | 612,795        | 618,923           | 625,112           | 631,364           | 637,677           | 644,054           |
| Total Nonoperating Revenues (Expenses)       |        | 3,333,892      | 3,284,807      | 3,352,358         | 3,421,465         | 3,492,166         | 3,564,500         | 3,638,506         |
| NET INCOME (LOSS) BEFORE TRANSFERS IN (OUT)  |        | (70,755)       | (13,880)       | (72,518)          | (136,379)         | (205,914)         | (281,617)         | (364,030)         |
| Transfers In (Out) - Interfund               | 420.00 | 0              | 0              | 0                 | 0                 | 0                 | 0                 | 0                 |
| NET INCOME (LOSS)                            |        | (70,755)       | (13,880)       | (72,518)          | (136,379)         | (205,914)         | (281,617)         | (364,030)         |

## **APPENDIX List**

**Organization Chart**

**Rolling Stock Inventory**

**Equipment Inventory**

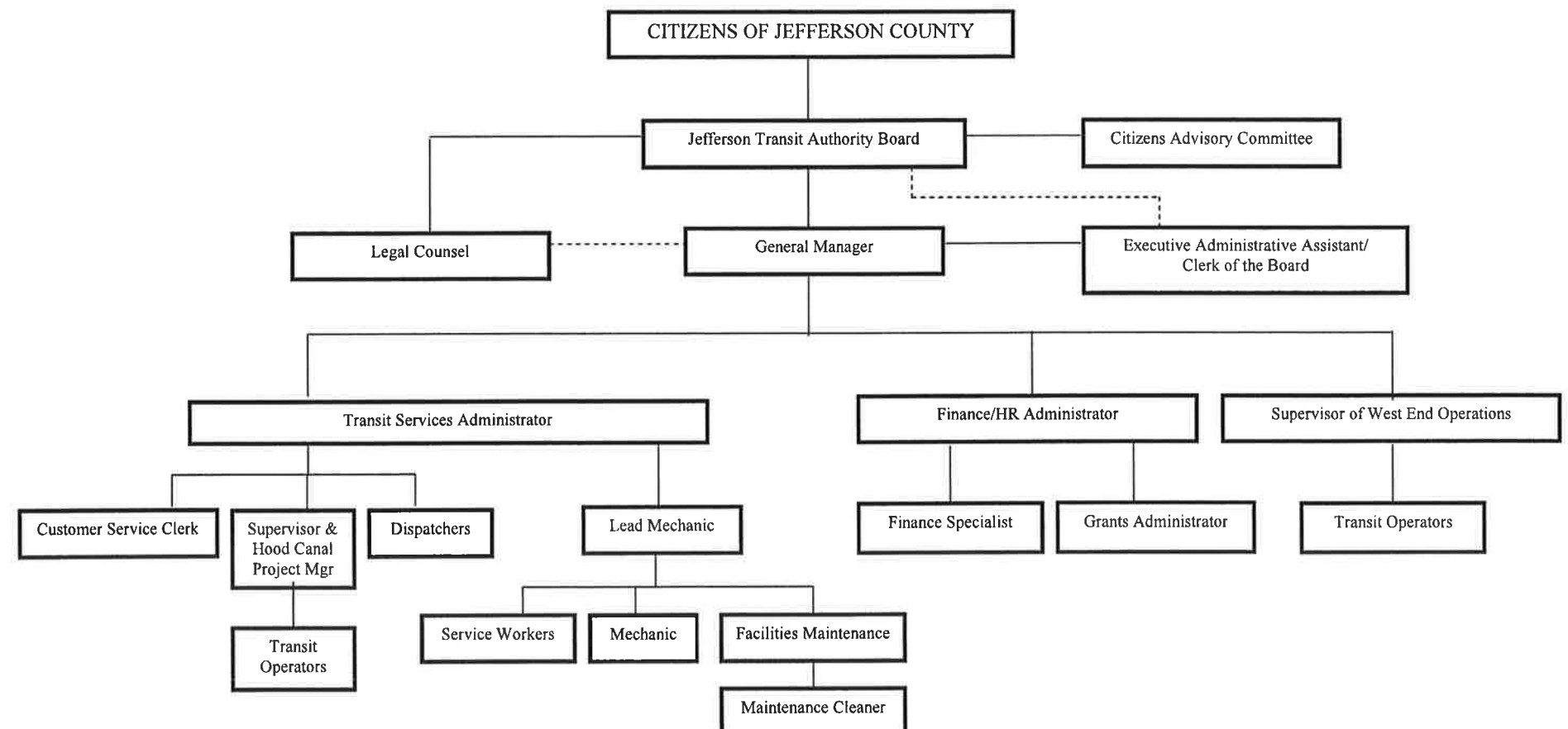
**Facilities Inventory**

**Route Maps and Schedules**



## JEFFERSON TRANSIT ORGANIZATIONAL CHART

March 17, 2009



**Public Transportation Management System  
Owned Rolling Stock Inventory & Verification of Continued Use**

**Agency/Organization:** Jefferson Transit  
**Date:** March 2009

*I hereby certify that all information reported in the inventories reflects true, accurate and complete information for the agency/organization listed and that project equipment purchased through a state or federal grant agreement is still being used in accordance with the terms and conditions of the grant agreement.*

Signature and Title

Date

|    |   | Vehicle Code | Vehicle Identification Number (VIN) | Agency Vehicle Number | 2008 ye Odometer | Condition (points) | Age (years) | Remaining Useful Life (years) | Replacement Cost \$ | ADA Access (Yes/No) | Seating Capacity | Fuel Type | WSDOT Title (Yes/No) |
|----|---|--------------|-------------------------------------|-----------------------|------------------|--------------------|-------------|-------------------------------|---------------------|---------------------|------------------|-----------|----------------------|
|    | <b>Fixed Route Fleet (Port Townsed)</b> |              |                                     |                       |                  |                    |             |                               |                     |                     |                  |           |                      |
| 1  | 1982/ORION 01.502/BIA                   | 03           | 2B1119477C6016523                   | 95                    | 444.5            | 60                 | 27          | 0                             | 385,000             | Yes                 | 31               | Diesel    | Yes                  |
| 2  | 1982/ORION 01.502/BIA                   | 03           | 2B111947OC6015519                   | 96                    | 438252           | 60                 | 27          | 0                             | 385,000             | Yes                 | 31               | Diesel    | Yes                  |
| 3  | 2004/GILLIG/PHANTOM 30 FT               | 03           | 15GCA211641111741                   | 501                   | 21634            | 90                 | 5           | 7                             | 385,000             | Yes                 | 29               | Diesel    | Yes                  |
| 4  | 2004/GILLIG/PHANTOM 30 FT               | 03           | 15GCA211841111742                   | 502                   | 12459            | 90                 | 5           | 7                             | 385,000             | Yes                 | 29               | Diesel    | Yes                  |
| 5  | 2004/GILLIG/PHANTOM 30 FT               | 03           | 15GCA211X41111743                   | 503                   | 124684           | 90                 | 5           | 7                             | 385,000             | Yes                 | 29               | Diesel    | Yes                  |
| 6  | 2005/Gillig/PHANTOM 30 FT               | 03           | 15GCA211X61111731                   | 504                   | 163902           | 90                 | 2           | 10                            | 385,000             | Yes                 | 29               | Diesel    | Yes                  |
| 7  | 1992/ORION V/BIA                        | 02           | 2B1529773N6030903                   | 908                   | 380149           | 60                 | 17          | 7                             | 385,000             | Yes                 | 33               | Diesel    | Yes                  |
| 8  | 1996/COLLINS/DIPLOMAT                   | 11           | 1FDLE40FXTHB46918                   | 961                   | 243113           | 50                 | 13          | 0                             | 120,000             | Yes                 | 18               | Diesel    | No                   |
| 9  | 1996/THOMAS/CITILINER                   | 04           | 1T7CL2B28T1140328                   | 963                   | 347236           | 50                 | 13          | 0                             | 385,000             | Yes                 | 29               | Diesel    | No                   |
| 10 | 1996/THOMAS/TRANSIT LINER               | 04           | 1T75L2B29V1145470                   | 965                   | 73683            | 50                 | 13          | 0                             | 385,000             | Yes                 | 30               | Diesel    | No                   |
| 11 | 1996/THOMAS/TRANSIT LINER               | 04           | 1T75L2B20V1145471                   | 966                   | 402984           | 50                 | 13          | 0                             | 385,000             | Yes                 | 29               | Diesel    | No                   |
| 12 | 1996/THOMAS/TRANSIT LINER               | 04           | 1T75L2B22V1145469                   | 967                   | 442436           | 50                 | 13          | 0                             | 385,000             | Yes                 | 29               | Diesel    | No                   |
| 13 | 1996/THOMAS/TRANSIT LINER               | 04           | 1T75L2B20V1145468                   | 968                   | 367646           | 50                 | 13          | 0                             | 385,000             | Yes                 | 29               | Diesel    | No                   |
| 14 | 2001/E 450 VAN                          | 11           | 1FDXE45F91HA38507                   | 969                   | 228712           | 90                 | 8           | 2                             | 120,000             | Yes                 | 18               | Diesel    | Yes                  |
| 15 | 2001/PHANTOM 35 FT                      | 02           | 15GCB211911111144                   | 971                   | 109752           | 90                 | 7           | 5                             | 385,000             | Yes                 | 32               | Diesel    | Yes                  |
| 16 | 2001/PHANTOM 35 FT                      | 02           | 15GCB211221111732                   | 972                   | 117448           | 90                 | 7           | 5                             | 385,000             | Yes                 | 32               | Diesel    | Yes                  |
| 17 | 1967/GMC/BABY OLD LOOK (2005)           | 03           | TDH35011041                         | 1967                  | 1879             | 100                | 31          | 8                             | 385,000             | No                  | 34               | Diesel    | Yes                  |
|    | <b>West-End Fleet (Forks)</b>           |              |                                     |                       |                  |                    |             |                               |                     |                     |                  |           |                      |
| 18 | 2003/FORD/E450 VAN                      | 11           | 1FDXE45F83HB33045                   | 401                   | 264608           | 100                | 6           | 1                             | 120,000             | Yes                 | 18               | Diesel    | No                   |
| 19 | 2003/FORD/E450 VAN                      | 11           | 1FDXE45FX3HB33046                   | 402                   | 273921           | 100                | 6           | 1                             | 120,000             | Yes                 | 18               | Diesel    | No                   |
| 20 | 2008/FORD/AIStar VAN                    | 11           | 1FD4E45S58DA96387                   | 403                   | 18964            | 100                | 1           | 6                             | 120,000             | Yes                 | 18               | Gasoline  | Yes                  |
| 21 | 2002/FORD/E450 VAN                      | 11           | 1FDXE45F92HA45166                   | 970                   | 245506           | 90                 | 7           | 0                             | 120,000             | Yes                 | 12               | Diesel    | Yes                  |



[illegible]

**Public Transportation Management System  
Owned Equipment Inventory**

**Agency/Organization:** Jefferson Transit

**Date:** December 31, 2008

| Equipment Code and Description |                     | Condition<br>(points) | Age<br>(years) | Remaining<br>Useful Life<br>(years) | Replacement<br>Cost (\$) | Comments<br><i>(If more than two lines, please attach a<br/>separate comment page)</i> |
|--------------------------------|---------------------|-----------------------|----------------|-------------------------------------|--------------------------|--|
| 1.                             | None over \$100,000 |                       |                |                                     |                          |  |
| 2.                             |                     |                       |                |                                     |                          |  |

**Public Transportation Management System  
Owned Facility Inventory**

**Agency/Organization:** Jefferson Transit

**Date:** December 31, 2008

|   | <b>Facility<br/>Code</b> | <b>Facility Name</b>             | <b>Condition<br/>(points)</b> | <b>Age<br/>(years)</b> | <b>Remaining<br/>Useful Life<br/>(years)</b> | <b>Replacement<br/>Cost (\$)</b> | <b>Comments</b><br><i>(If more than two lines, please<br/>attach a separate comment page)</i> |
|---|--------------------------|----------------------------------|-------------------------------|------------------------|--|----------------------------------|---|
| 1 | 23                       | Operations & Maintenance Center  | 50                            | 21                     | 1  | \$14,000,000                     |   |
| 2 | 9                        | Haines Place Park & Ride         | 85                            | 13                     | 18   | \$750,000                        |   |
| 3 | 24                       | Future Operations & Maint Center | 100                           | 2                      | 30   | \$210,000                        | 10 Acre Land Parcel (Undeveloped)   |
| 4 |                          |                                  |                               |                        |  |                                  |   |

8 Sequim

(Connections to Port Angeles & Forks)

See Holiday Info

MONDAY through SATURDAY only. NOTE: Buses no longer make "flag stops" on this route. Bus stops are designated by signs with the Jefferson Transit logo.

PORT TOWNSEND to SEQUIM

|                | Park & Ride | Lawrence & Tyler | Water & Quincy | Park & Ride | St. Mary's & Highway 101 | SR-20 (N) & 4-Corners | Opposite Discovery Bay Store | Sequim Bay Store | Sequim Total Center | Sequim Onk. Center |
|----------------|-------------|------------------|----------------|-------------|--------------------------|-----------------------|------------------------------|------------------|---------------------|--------------------|
| MON.-FRI. ONLY | —           | —                | —              | —           | 6:06                     | 6:07                  | 6:14                         | 6:25             | 6:33                | 6:52               |
|                | —           | —                | —              | —           | 8:35                     | 8:36                  | 8:45                         | 8:54             | 9:02                | 9:21               |
|                | —           | —                | —              | —           | 11:45                    | 11:46                 | 11:55                        | 12:04            | 12:12               | 12:31              |
|                | —           | —                | —              | —           | 3:00                     | 3:01                  | 3:10                         | 3:19             | 3:27                | 3:46               |
|                | —           | —                | —              | —           | 5:55                     | 5:56                  | 6:05                         | 6:14             | 6:22                | 6:41               |
| SATURDAY ONLY  | 8:41        | 8:46             | 8:48           | —           | 8:55                     | 8:56                  | 9:05                         | 9:14             | 9:22                | 9:41               |
|                | —           | —                | —              | —           | 4:00                     | 4:02                  | 4:11                         | 4:20             | 4:28                | 4:47               |

SEQUIM to PORT TOWNSEND

|                | Sequim Onk. Center | Sequim Total Center | Discovery Bay Store | SR-20 (N) & 4-Corners | Jefferson Bay Store | Opposite Discovery Bay Store | Park & Ride |
|----------------|--------------------|---------------------|---------------------|-----------------------|---------------------|------------------------------|-------------|
| MON.-FRI. ONLY | 6:55               | 7:06                | 7:10                | 7:17                  | 7:25                | 7:34                         | 7:37        |
|                | 9:44               | 9:57                | 10:03               | 10:11                 | 10:20               | 10:28                        | 10:30       |
|                | 12:43              | 12:56               | 1:02                | 1:10                  | 1:19                | 1:27                         | 1:29        |
|                | 4:53               | 5:06                | 5:12                | 5:20                  | 5:29                | 5:37                         | 5:39        |
|                | 6:59               | 7:12                | 7:18                | 7:26                  | 7:34                | 7:43                         | 7:45        |
| SATURDAY ONLY  | 9:45               | 9:58                | 10:04               | 10:12                 | 10:21               | 10:29                        | 10:31       |
|                | 4:55               | 5:08                | 5:14                | 5:22                  | 5:31                | 5:39                         | 5:41        |

No connections to Poughkeepsie or the Tri-Area

**DIAL-A-RIDE**  
Door-to-door service for ADA-eligible individuals is available during the following times:

WEEKDAYS  
7 am to 8 pm

WEEKENDS  
8 am to 7 pm

FARE: \$1.00 per ride

385-4777 for eligibility and ride scheduling information

All Jefferson Transit Services are Lift-Equipped and Wheelchair Accessible.

**VANPOOL TO WORK**

Call about our ridesharing services:  
**385-4777**

or go to:  
[rideshareonline.com](http://rideshareonline.com)

1 Brinnon/Quilcene/Tri-Area

(Connections to Shelton and Olympia)

See Holiday Info

MONDAY through SATURDAY only. NOTE: Buses no longer make "flag stops" on this route. Bus stops are designated by signs with the Jefferson Transit logo. SCHEDULE DELAYS — To comply with the Americans With Disabilities Act, the Brinnon/Quilcene bus, on request, may deviate up to 1/2 of a mile from its regular route. Bus deviations allowed only on adequate county roads and streets, between SR-104 and Brinnon. Requests for this service may cause schedule delays. Weather conditions may cause interruptions of this service. For more information call 385-4777.

PORT TOWNSEND to QUILCENE & BRINNON via TRI-AREA

|                | Park & Ride | Lawrence & Tyler | Water & Quincy | Park & Ride | St. Mary's & Highway 101 | SR-104 & Airport Road | Brinnon & Highway 101 | Port Angeles & Highway 101 | Quilcene & Highway 101 | Half-Way House | Mark Point Rd. |
|----------------|-------------|------------------|----------------|-------------|--------------------------|-----------------------|-----------------------|----------------------------|------------------------|----------------|----------------|
| MON.-FRI. ONLY | —           | —                | —              | 6:05        | 6:07                     | 6:10                  | 6:17                  | 6:19                       | 6:22                   | 6:33           | 7:04           |
|                | —           | —                | —              | 8:35        | 8:36                     | 8:39                  | 8:46                  | 8:48                       | 8:51                   | 9:02           | 9:33           |
|                | —           | —                | —              | 11:45       | 11:46                    | 11:49                 | 11:56                 | 11:58                      | 12:01                  | 12:12          | 12:43          |
|                | —           | —                | —              | 3:00        | 3:01                     | 3:04                  | 3:11                  | 3:13                       | 3:16                   | 3:27           | 3:58           |
|                | —           | —                | —              | 5:55        | 5:56                     | 5:59                  | 6:06                  | 6:08                       | 6:11                   | 6:22           | 6:53           |
| SATURDAY ONLY  | 6:46        | 6:52             | 6:54           | 6:59        | 7:01                     | 7:04                  | 7:11                  | 7:13                       | 7:16                   | 7:27           | 7:58           |
|                | —           | —                | —              | 12:05       | 12:07                    | 12:10                 | 12:17                 | 12:19                      | 12:22                  | 12:33          | 13:04          |
|                | —           | —                | —              | 5:35        | 5:37                     | 5:40                  | 5:47                  | 5:49                       | 5:52                   | 6:03           | 6:34           |

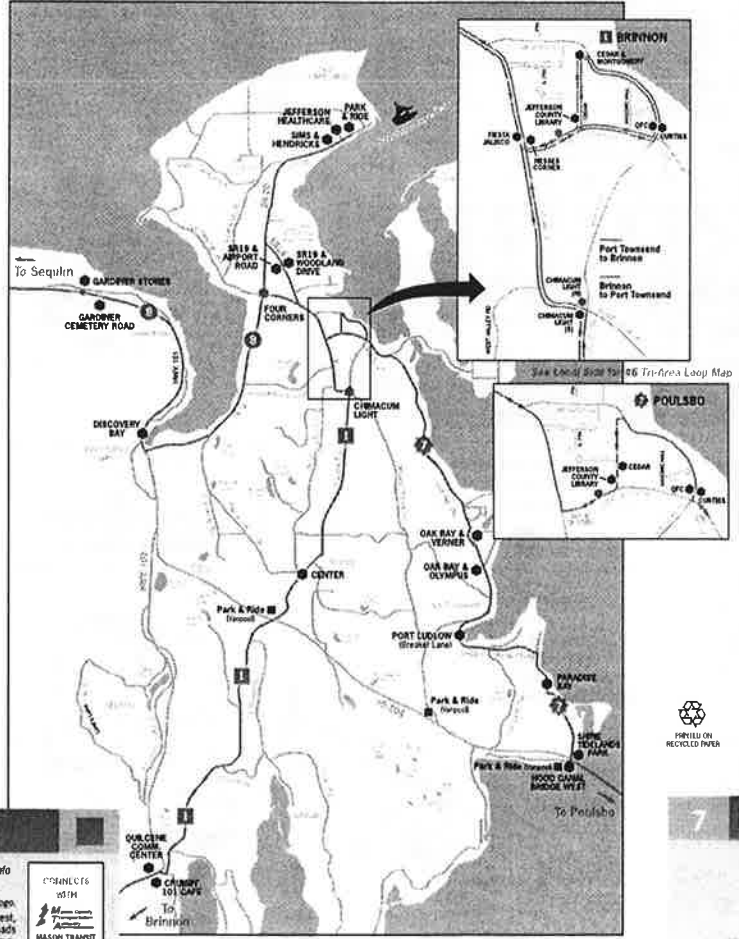
\* Follows SR-104 Loop Route to Chinook Light, then follows SR-101 route to Brinnon.

BRINNON & QUILCENE to PORT TOWNSEND via TRI-AREA

|                | Block Point Rd. | Brinnon Bay | Crocker & Cafe | Crocker (N) | Chinook Light (N) | Port Angeles & Highway 101 | Brinnon & Highway 101 | St. Mary's & Highway 101 | SR-104 & Airport Road | SR-20 (N) & 4-Corners | Jefferson Bay Store | Park & Ride |
|----------------|-----------------|-------------|----------------|-------------|-------------------|----------------------------|-----------------------|--------------------------|-----------------------|-----------------------|---------------------|-------------|
| MON.-FRI. ONLY | 7:05            | 7:26        | 7:40           | 7:54        | 8:00              | 8:06                       | 8:08                  | 8:12                     | 8:15                  | —                     | 8:24                | 8:26        |
|                | 9:59            | 10:20       | 10:34          | 10:48       | 10:54             | 11:00                      | 11:02                 | 11:06                    | 11:09                 | —                     | 11:18               | 11:20       |
|                | 12:40           | 13:01       | 13:15          | 13:29       | 13:35             | 13:41                      | 13:43                 | 13:47                    | 13:50                 | —                     | 14:00               | 14:02       |
|                | 5:08            | 5:29        | 5:43           | 5:57        | 6:03              | 6:09                       | 6:11                  | 6:15                     | 6:18                  | —                     | 6:27                | 6:29        |
|                | 8:35            | 8:56        | 9:10           | 9:24        | 9:30              | 9:36                       | 9:38                  | 9:42                     | 9:45                  | —                     | 9:54                | 9:56        |
| SATURDAY ONLY  | 8:03            | 8:12        | 8:26           | 8:40        | 8:46              | 8:52                       | 8:54                  | 8:58                     | 9:01                  | —                     | 9:10                | 9:12        |
|                | 1:09            | 1:19        | 1:33           | 1:47        | 1:53              | 1:59                       | 2:01                  | 2:05                     | 2:08                  | —                     | 2:17                | 2:19        |
|                | —               | 6:40        | 6:54           | 7:08        | 7:14              | 7:20                       | 7:22                  | 7:26                     | 7:29                  | —                     | 7:38                | 7:40        |

\* Transfer point for Poughkeepsie

\*\* Transfer point for Sequim



JEFFERSON TRANSIT CONNECTIONS TO OTHER COUNTIES

Contact individual Transit Authorities for their schedule information.

CLALLAM TRANSIT  
1-800-858-3747  
[www.clallamtransit.com](http://www.clallamtransit.com)

WEST JEFFERSON TRANSIT  
1-800-371-0497  
[www.westjeffersontransit.com](http://www.westjeffersontransit.com)

GRAYS HARBOR TRANSIT  
1-800-562-9730  
[www.ghtransit.com](http://www.ghtransit.com)

Connections in Sequim to Port Angeles and Forks. Connections with Clallam Transit in Ferrel south to Amanda Park. Connections with West Jefferson Transit in Amanda Park south to Aberdeen. Consult COHO Ferry Schedule for Victoria, B.C. connections (1-360-457-4491).

KITSAP TRANSIT 1-800-501-7433 [www.kitsaptransit.com](http://www.kitsaptransit.com)  
Connections with Kitsap Transit in Poulsbo to Bainbridge Island, Kingston, Kitsap Mall, Bremerton Ferry Dock, and Washington State Ferries (in Bainbridge).

MASON TRANSIT 1-800-374-3747 [www.masontransit.org](http://www.masontransit.org)  
Connections with Mason Transit in Brinnon to Shelton and Olympia.

ISLAND TRANSIT 1-800-240-8747 [www.islandtransit.org](http://www.islandtransit.org)  
Connections with Island Transit via Washington State Ferries (Port Townsend to Keystone).

# COMMUTER ROUTES

Note: If your trip requires a transfer to another route, please notify the driver of your final destination as you board.

ALL TIMES ARE DEPARTURE TIMES

AM times in light type  
PM times in bold type

Time Points  
Transfer Points

**HOLIDAYS**  
NO SERVICE on Memorial Day, Independence Day, Labor Day, Veteran's Day, Thanksgiving Day, Christmas Day, and New Year's Day.

**TIPS ON CATCHING THE BUS**

Times listed in the schedule are **time points**. Use time points to determine when the bus is due. **Commuter Routes #1, #7 and #8** stop only at designated bus stops. Bus drivers may not stop unless signaled by a waiting passenger. Passengers may signal the driver by following these easy instructions:

1. Be sure that you stand near the bus stop sign so the bus driver can see you and safely pull off the roadway.
2. Be visible by wearing light colored clothing. During hours of darkness, signal with a flashlight.
3. Drivers notice motion. As you see the bus approaching, raise your arm and move it in a large arc to signal the driver to stop.
4. As the bus starts to pull over lay back and out of the way of the bus.
5. If the road conditions are not suitable for the driver to stop exactly where you are, the driver may stop before or after your location. Please be aware of this if the bus drives by.
6. Always, be cautious. Your safety is our first concern!

7 Poulsbo/Port Ludlow/Tri-Area

(Connections to Seattle, Bainbridge, Silverdale & Bremerton)

See Holiday Info

NOTE: Buses no longer make "flag stops" on this route. Bus stops are designated by signs with the Jefferson Transit logo. SCHEDULE DELAYS — Connections to and from Poughkeepsie are often affected by ferry schedules, traffic, and Hood Canal Bridge closures. Allow extra time to get to your destination.

PORT TOWNSEND to POULSBY via TRI-AREA & PORT LUDLOW

|                | Park & Ride | Lawrence & Tyler | Water & Quincy | Park & Ride | St. Mary's & Highway 101 | SR-20 (N) & 4-Corners | Cedar Point (N) | Port Angeles & Highway 101 | Oak Bay & Highway 101 | Port Ludlow & Highway 101 | Paradise Bay | Hood Canal West | Poughkeepsie Center |
|----------------|-------------|------------------|----------------|-------------|--------------------------|-----------------------|-----------------|----------------------------|-----------------------|---------------------------|--------------|-----------------|---------------------|
| MON.-FRI. ONLY | 5:50        | 5:55             | 5:57           | 6:04        | 6:06                     | 6:14                  | 6:15            | 6:23                       | 6:33                  | 6:38                      | 6:45         | 6:49            | 7:07                |
|                | —           | —                | —              | 8:20        | 8:22                     | 8:30                  | 8:35            | 8:39                       | 8:49                  | 8:54                      | 9:01         | 9:05            | 10:23               |
|                | —           | —                | —              | 11:20       | 11:22                    | 11:30                 | 11:35           | 11:39                      | 11:49                 | 11:54                     | 12:01        | 12:05           | 12:23               |
|                | —           | —                | —              | 3:24        | 3:26                     | 3:34                  | 3:39            | 3:43                       | 3:53                  | 3:58                      | 4:05         | 4:09            | 4:27                |
|                | —           | —                | —              | 5:06        | 5:08                     | 5:16                  | 5:21            | 5:25                       | 5:35                  | 5:40                      | 5:47         | 5:51            | 6:09                |
| SATURDAY ONLY  | 8:20        | 8:25             | 8:27           | 8:34        | 8:36                     | 8:44                  | 8:49            | 8:53                       | 9:03                  | 9:08                      | 9:15         | 9:19            | 9:37                |
|                | —           | —                | —              | 3:22        | 3:24                     | 3:32                  | 3:37            | 3:41                       | 3:51                  | 3:56                      | 4:03         | 4:07            | 4:25                |
| SUNDAY ONLY    | 9:16        | 9:21             | 9:23           | 9:30        | 9:32                     | 9:40                  | 9:45            | 9:49                       | 9:59                  | 10:04                     | 10:11        | 10:15           | 10:33               |
|                | —           | —                | —              | 3:22        | 3:24                     | 3:32                  | 3:37            | 3:41                       | 3:51                  | 3:56                      | 4:03         | 4:07            | 4:25                |

POULSBY to PORT TOWNSEND via PORT LUDLOW & TRI-AREA

|                | Poughkeepsie Center | St. Mary's & Highway 101 | Paradise Bay | Port Ludlow & Highway 101 | Oak Bay & Highway 101 | Port Angeles & Highway 101 | SR-20 (N) & 4-Corners | Jefferson Bay Store | Park & Ride |
|----------------|---------------------|--------------------------|--------------|---------------------------|-----------------------|----------------------------|-----------------------|---------------------|-------------|
| MON.-FRI. ONLY | 7:30                | 7:49                     | 7:53         | 8:00                      | 8:05                  | 8:15                       | 8:19                  | 8:24                | 8:36        |
|                | 10:45               | 11:04                    | 11:08        | 11:15                     | 11:20                 | 11:30                      | 11:34                 | 11:39               | 11:47       |
|                | 12:40               | 12:59                    | 1:03         | 1:10                      | 1:15                  | 1:25                       | 1:29                  | 1:34                | 1:42        |
|                | 5:08                | 5:24                     | 5:28         | 5:35                      | 5:40                  | 5:50                       | 5:54                  | 5:59                | 6:07        |
|                | 8:35                | 8:54                     | 8:58         | 9:05                      | 9:10                  | 9:20                       | 9:24                  | 9:29                | 9:37        |
| SATURDAY ONLY  | 10:45               | 11:04                    | 11:08        | 11:15                     | 11:20                 | 11:30                      | 11:34                 | 11:39               | 11:47       |
|                | 4:55                | 5:14                     | 5:18         | 5:25                      | 5:30                  | 5:40                       | 5:44                  | 5:49                | 5:57        |
| SUNDAY ONLY    | 11:40               | 11:59                    | 12:03        | 12:10                     | 12:15                 | 12:25                      | 12:29                 | 12:34               | 12:42       |
|                | 4:55                | 5:14                     | 5:18         | 5:25                      | 5:30                  | 5:40                       | 5:44                  | 5:49                | 5:57        |

\* No connections to Sequim

\*\* Transfer point for Brinnon

\*\* Transfer point for Sequim



| 14 North Beach   |             |             |                 |            |            |                 |                 |             |             |             |             |
|------------------|-------------|-------------|-----------------|------------|------------|-----------------|-----------------|-------------|-------------|-------------|-------------|
| See Holiday Info |             |             |                 |            |            |                 |                 |             |             |             |             |
|                  | Park & Ride | Park & Ride | San Juan & 10th | 5th & 10th | 5th & 10th | Hastings & 10th | Sheridan & 10th | Park & Ride | Park & Ride | Park & Ride | Park & Ride |
| MON-FRI ONLY     | 8:07        | 8:09        | 8:13            | 8:17       | 8:21       | 8:25            | 8:29            | 8:34        | 8:38        | 8:42        | 8:46        |
| 7 DAYS A WEEK    | 9:07        | 9:09        | 9:13            | 9:17       | 9:21       | 9:25            | 9:29            | 9:34        | 9:38        | 9:42        | 9:46        |
|                  | 10:07       | 10:09       | 10:13           | 10:17      | 10:21      | 10:25           | 10:29           | 10:34       | 10:38       | 10:42       | 10:46       |
|                  | 11:07       | 11:09       | 11:13           | 11:17      | 11:21      | 11:25           | 11:29           | 11:34       | 11:38       | 11:42       | 11:46       |
|                  | 12:07       | 12:09       | 12:13           | 12:17      | 12:21      | 12:25           | 12:29           | 12:34       | 12:38       | 12:42       | 12:46       |
|                  | 1:07        | 1:09        | 1:13            | 1:17       | 1:21       | 1:25            | 1:29            | 1:34        | 1:38        | 1:42        | 1:46        |
|                  | 2:07        | 2:09        | 2:13            | 2:17       | 2:21       | 2:25            | 2:29            | 2:34        | 2:38        | 2:42        | 2:46        |
|                  | 3:07        | 3:09        | 3:13            | 3:17       | 3:21       | 3:25            | 3:29            | 3:34        | 3:38        | 3:42        | 3:46        |
|                  | 4:07        | 4:09        | 4:13            | 4:17       | 4:21       | 4:25            | 4:29            | 4:34        | 4:38        | 4:42        | 4:46        |
|                  | 5:07        | 5:09        | 5:13            | 5:17       | 5:21       | 5:25            | 5:29            | 5:34        | 5:38        | 5:42        | 5:46        |

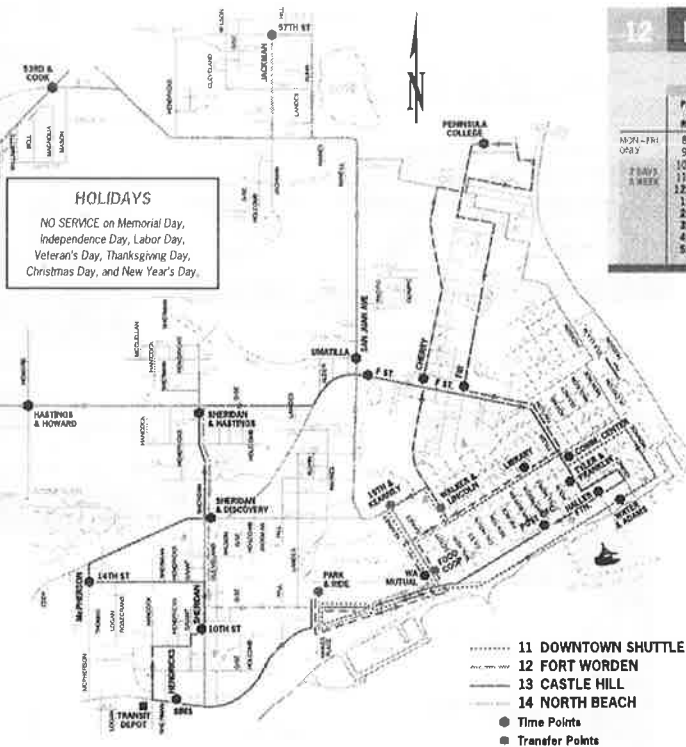
**DIAL-A-RIDE**  
Door-to-door service for ADA-eligible individuals is available during the following times:  
WEEKDAYS 7 am to 8 pm WEEKENDS 8 am to 7 pm  
FARE: \$1.00 per ride  
385-4777 for eligibility and ride scheduling information

| 13 Castle Hill   |             |                 |             |             |                 |              |              |                 |             |             |             |
|------------------|-------------|-----------------|-------------|-------------|-----------------|--------------|--------------|-----------------|-------------|-------------|-------------|
| See Holiday Info |             |                 |             |             |                 |              |              |                 |             |             |             |
|                  | Park & Ride | San Juan & 10th | 10th & 10th | 10th & 10th | Sheridan & 10th | F St. & 10th | Tyler & 10th | Hastings & 10th | Park Office | Park & Ride | Park & Ride |
| MON-FRI ONLY     | 8:00        | 8:02            | 8:05        | 8:07        | 8:11            | 8:13         | 8:16         | 8:18            | 8:19        | 8:25        | 8:25        |
| 7 DAYS A WEEK    | 8:30        | 8:32            | 8:35        | 8:37        | 8:41            | 8:43         | 8:46         | 8:48            | 8:49        | 8:55        | 8:55        |
|                  | 9:00        | 9:02            | 9:05        | 9:07        | 9:11            | 9:13         | 9:16         | 9:18            | 9:19        | 9:25        | 9:25        |
|                  | 9:30        | 9:32            | 9:35        | 9:37        | 9:41            | 9:43         | 9:46         | 9:48            | 9:49        | 9:55        | 9:55        |
|                  | 10:00       | 10:02           | 10:05       | 10:07       | 10:11           | 10:13        | 10:16        | 10:18           | 10:19       | 10:25       | 10:25       |
|                  | 10:30       | 10:32           | 10:35       | 10:37       | 10:41           | 10:43        | 10:46        | 10:48           | 10:49       | 10:55       | 10:55       |
|                  | 11:00       | 11:02           | 11:05       | 11:07       | 11:11           | 11:13        | 11:16        | 11:18           | 11:19       | 11:25       | 11:25       |
|                  | 11:30       | 11:32           | 11:35       | 11:37       | 11:41           | 11:43        | 11:46        | 11:48           | 11:49       | 11:55       | 11:55       |
|                  | 12:00       | 12:02           | 12:05       | 12:07       | 12:11           | 12:13        | 12:16        | 12:18           | 12:19       | 12:25       | 12:25       |
|                  | 12:30       | 12:32           | 12:35       | 12:37       | 12:41           | 12:43        | 12:46        | 12:48           | 12:49       | 12:55       | 12:55       |
|                  | 1:00        | 1:02            | 1:05        | 1:07        | 1:11            | 1:13         | 1:16         | 1:18            | 1:19        | 1:25        | 1:25        |
|                  | 1:30        | 1:32            | 1:35        | 1:37        | 1:41            | 1:43         | 1:46         | 1:48            | 1:49        | 1:55        | 1:55        |
|                  | 2:00        | 2:02            | 2:05        | 2:07        | 2:11            | 2:13         | 2:16         | 2:18            | 2:19        | 2:25        | 2:25        |
|                  | 2:30        | 2:32            | 2:35        | 2:37        | 2:41            | 2:43         | 2:46         | 2:48            | 2:49        | 2:55        | 2:55        |
|                  | 3:00        | 3:02            | 3:05        | 3:07        | 3:11            | 3:13         | 3:16         | 3:18            | 3:19        | 3:25        | 3:25        |
|                  | 3:30        | 3:32            | 3:35        | 3:37        | 3:41            | 3:43         | 3:46         | 3:48            | 3:49        | 3:55        | 3:55        |
|                  | 4:00        | 4:02            | 4:05        | 4:07        | 4:11            | 4:13         | 4:16         | 4:18            | 4:19        | 4:25        | 4:25        |
|                  | 4:30        | 4:32            | 4:35        | 4:37        | 4:41            | 4:43         | 4:46         | 4:48            | 4:49        | 4:55        | 4:55        |
|                  | 5:00        | 5:02            | 5:05        | 5:07        | 5:11            | 5:13         | 5:16         | 5:18            | 5:19        | 5:25        | 5:25        |
|                  | 5:30        | 5:32            | 5:35        | 5:37        | 5:41            | 5:43         | 5:46         | 5:48            | 5:49        | 5:55        | 5:55        |
|                  | 6:00        | 6:02            | 6:05        | 6:07        | 6:11            | 6:13         | 6:16         | 6:18            | 6:19        | 6:25        | 6:25        |



Note: If your trip requires a transfer to another route, please notify the driver of your final destination as you board.

ALL TIMES ARE DEPARTURE TIMES  
AM times in light type PM times in bold type



**VANPOOL TO WORK**  
Call about our ride-matching services:  
385-4777  
or go to:  
rideshareonline.com



All Jefferson Transit Services are Lift-Equipped and Wheelchair Accessible.

| 12 Fort Worden   |             |             |              |                    |                    |                    |                    |                    |                    |                    |                    |
|------------------|-------------|-------------|--------------|--------------------|--------------------|--------------------|--------------------|--------------------|--------------------|--------------------|--------------------|
| See Holiday Info |             |             |              |                    |                    |                    |                    |                    |                    |                    |                    |
|                  | Park & Ride | Park & Ride | Cherry & 1st | Penninsula College | Penninsula College | Penninsula College | Penninsula College | Penninsula College | Penninsula College | Penninsula College | Penninsula College |
| MON-FRI ONLY     | 8:35        | 8:37        | 8:40         | 8:44               | 8:48               | 8:50               | 8:53               | 8:55               | 8:58               | 9:00               | 9:03               |
| 7 DAYS A WEEK    | 9:35        | 9:37        | 9:40         | 9:44               | 9:48               | 9:50               | 9:53               | 9:55               | 9:58               | 10:00              | 10:03              |
|                  | 10:35       | 10:37       | 10:40        | 10:44              | 10:48              | 10:50              | 10:53              | 10:55              | 10:58              | 11:00              | 11:03              |
|                  | 11:35       | 11:37       | 11:40        | 11:44              | 11:48              | 11:50              | 11:53              | 11:55              | 11:58              | 12:00              | 12:03              |
|                  | 12:35       | 12:37       | 12:40        | 12:44              | 12:48              | 12:50              | 12:53              | 12:55              | 12:58              | 13:00              | 13:03              |
|                  | 1:35        | 1:37        | 1:40         | 1:44               | 1:48               | 1:50               | 1:53               | 1:55               | 1:58               | 2:00               | 2:03               |
|                  | 2:35        | 2:37        | 2:40         | 2:44               | 2:48               | 2:50               | 2:53               | 2:55               | 2:58               | 3:00               | 3:03               |
|                  | 3:35        | 3:37        | 3:40         | 3:44               | 3:48               | 3:50               | 3:53               | 3:55               | 3:58               | 4:00               | 4:03               |
|                  | 4:35        | 4:37        | 4:40         | 4:44               | 4:48               | 4:50               | 4:53               | 4:55               | 4:58               | 5:00               | 5:03               |
|                  | 5:35        | 5:37        | 5:40         | 5:44               | 5:48               | 5:50               | 5:53               | 5:55               | 5:58               | 6:00               | 6:03               |

| 11 Shuttle       |             |               |              |           |             |             |             |             |             |             |             |
|------------------|-------------|---------------|--------------|-----------|-------------|-------------|-------------|-------------|-------------|-------------|-------------|
| See Holiday Info |             |               |              |           |             |             |             |             |             |             |             |
|                  | Park & Ride | Water & Adams | Comm. Center | WA Mutual | Park & Ride | Park & Ride | Park & Ride | Park & Ride | Park & Ride | Park & Ride | Park & Ride |
| MON-FRI ONLY     | 7:20        | 7:24          | 7:28         | 7:31      | 7:33        | 7:40        | 7:44        | 7:48        | 7:51        | 7:53        | 7:55        |
| 7 DAYS A WEEK    | 8:20        | 8:24          | 8:28         | 8:31      | 8:33        | 8:40        | 8:44        | 8:48        | 8:51        | 8:53        | 8:55        |
|                  | 9:20        | 9:24          | 9:28         | 9:31      | 9:33        | 9:40        | 9:44        | 9:48        | 9:51        | 9:53        | 9:55        |
|                  | 10:20       | 10:24         | 10:28        | 10:31     | 10:33       | 10:40       | 10:44       | 10:48       | 10:51       | 10:53       | 10:55       |
|                  | 11:20       | 11:24         | 11:28        | 11:31     | 11:33       | 11:40       | 11:44       | 11:48       | 11:51       | 11:53       | 11:55       |
|                  | 12:20       | 12:24         | 12:28        | 12:31     | 12:33       | 12:40       | 12:44       | 12:48       | 12:51       | 12:53       | 12:55       |
|                  | 1:20        | 1:24          | 1:28         | 1:31      | 1:33        | 1:40        | 1:44        | 1:48        | 1:51        | 1:53        | 1:55        |
|                  | 2:20        | 2:24          | 2:28         | 2:31      | 2:33        | 2:40        | 2:44        | 2:48        | 2:51        | 2:53        | 2:55        |
|                  | 3:20        | 3:24          | 3:28         | 3:31      | 3:33        | 3:40        | 3:44        | 3:48        | 3:51        | 3:53        | 3:55        |
|                  | 4:20        | 4:24          | 4:28         | 4:31      | 4:33        | 4:40        | 4:44        | 4:48        | 4:51        | 4:53        | 4:55        |
|                  | 5:20        | 5:24          | 5:28         | 5:31      | 5:33        | 5:40        | 5:44        | 5:48        | 5:51        | 5:53        | 5:55        |
|                  | 6:20        | 6:24          | 6:28         | 6:31      | 6:33        | 6:40        | 6:44        | 6:48        | 6:51        | 6:53        | 6:55        |
|                  | 7:20        | 7:24          | 7:28         | 7:31      | 7:33        | 7:40        | 7:44        | 7:48        | 7:51        | 7:53        | 7:55        |

6

# Tri-Area Loop

See Holiday Info

## (Port Townsend to Tri-Area to Port Townsend)

For additional routes to the Tri-Area  
see routes #1 Brannon and #7 Poudre

### TRI-AREA LOOP A

|              | Park & Ride | 4 Corners | Brandegee | 7th & Main | 8th & Main | Jefferson County Library | Madison Park | Port Madison | Chimacum | St. Ignace | Park & Ride |
|--------------|-------------|-----------|-----------|------------|------------|--------------------------|--------------|--------------|----------|------------|-------------|
| MON-FRI ONLY | 8:30        | 8:40      | 8:45      | 8:50       | 8:55       | 9:00                     | 9:05         | 9:10         | 9:15     | 9:20       | 9:25        |
|              | 9:30        | 9:40      | 9:45      | 9:50       | 9:55       | 10:00                    | 10:05        | 10:10        | 10:15    | 10:20      | 10:25       |
|              | 10:30       | 10:40     | 10:45     | 10:50      | 10:55      | 11:00                    | 11:05        | 11:10        | 11:15    | 11:20      | 11:25       |
|              | 11:30       | 11:40     | 11:45     | 11:50      | 11:55      | 12:00                    | 12:05        | 12:10        | 12:15    | 12:20      | 12:25       |
|              | 12:30       | 12:40     | 12:45     | 12:50      | 12:55      | 13:00                    | 13:05        | 13:10        | 13:15    | 13:20      | 13:25       |
|              | 1:30        | 1:40      | 1:45      | 1:50       | 1:55       | 2:00                     | 2:05         | 2:10         | 2:15     | 2:20       | 2:25        |
|              | 2:30        | 2:40      | 2:45      | 2:50       | 2:55       | 3:00                     | 3:05         | 3:10         | 3:15     | 3:20       | 3:25        |
|              | 3:30        | 3:40      | 3:45      | 3:50       | 3:55       | 4:00                     | 4:05         | 4:10         | 4:15     | 4:20       | 4:25        |
|              | 4:30        | 4:40      | 4:45      | 4:50       | 4:55       | 5:00                     | 5:05         | 5:10         | 5:15     | 5:20       | 5:25        |
|              | 5:30        | 5:40      | 5:45      | 5:50       | 5:55       | 6:00                     | 6:05         | 6:10         | 6:15     | 6:20       | 6:25        |
|              | 6:30        | 6:40      | 6:45      | 6:50       | 6:55       | 7:00                     | 7:05         | 7:10         | 7:15     | 7:20       | 7:25        |
|              | 7:30        | 7:40      | 7:45      | 7:50       | 7:55       | 8:00                     | 8:05         | 8:10         | 8:15     | 8:20       | 8:25        |
|              | 8:30        | 8:40      | 8:45      | 8:50       | 8:55       | 9:00                     | 9:05         | 9:10         | 9:15     | 9:20       | 9:25        |
|              | 9:30        | 9:40      | 9:45      | 9:50       | 9:55       | 10:00                    | 10:05        | 10:10        | 10:15    | 10:20      | 10:25       |
|              | 10:30       | 10:40     | 10:45     | 10:50      | 10:55      | 11:00                    | 11:05        | 11:10        | 11:15    | 11:20      | 11:25       |
|              | 11:30       | 11:40     | 11:45     | 11:50      | 11:55      | 12:00                    | 12:05        | 12:10        | 12:15    | 12:20      | 12:25       |
|              | 12:30       | 12:40     | 12:45     | 12:50      | 12:55      | 13:00                    | 13:05        | 13:10        | 13:15    | 13:20      | 13:25       |
|              | 1:30        | 1:40      | 1:45      | 1:50       | 1:55       | 2:00                     | 2:05         | 2:10         | 2:15     | 2:20       | 2:25        |
|              | 2:30        | 2:40      | 2:45      | 2:50       | 2:55       | 3:00                     | 3:05         | 3:10         | 3:15     | 3:20       | 3:25        |
|              | 3:30        | 3:40      | 3:45      | 3:50       | 3:55       | 4:00                     | 4:05         | 4:10         | 4:15     | 4:20       | 4:25        |
|              | 4:30        | 4:40      | 4:45      | 4:50       | 4:55       | 5:00                     | 5:05         | 5:10         | 5:15     | 5:20       | 5:25        |
|              | 5:30        | 5:40      | 5:45      | 5:50       | 5:55       | 6:00                     | 6:05         | 6:10         | 6:15     | 6:20       | 6:25        |
|              | 6:30        | 6:40      | 6:45      | 6:50       | 6:55       | 7:00                     | 7:05         | 7:10         | 7:15     | 7:20       | 7:25        |
|              | 7:30        | 7:40      | 7:45      | 7:50       | 7:55       | 8:00                     | 8:05         | 8:10         | 8:15     | 8:20       | 8:25        |
|              | 8:30        | 8:40      | 8:45      | 8:50       | 8:55       | 9:00                     | 9:05         | 9:10         | 9:15     | 9:20       | 9:25        |
|              | 9:30        | 9:40      | 9:45      | 9:50       | 9:55       | 10:00                    | 10:05        | 10:10        | 10:15    | 10:20      | 10:25       |
|              | 10:30       | 10:40     | 10:45     | 10:50      | 10:55      | 11:00                    | 11:05        | 11:10        | 11:15    | 11:20      | 11:25       |
|              | 11:30       | 11:40     | 11:45     | 11:50      | 11:55      | 12:00                    | 12:05        | 12:10        | 12:15    | 12:20      | 12:25       |
|              | 12:30       | 12:40     | 12:45     | 12:50      | 12:55      | 13:00                    | 13:05        | 13:10        | 13:15    | 13:20      | 13:25       |
|              | 1:30        | 1:40      | 1:45      | 1:50       | 1:55       | 2:00                     | 2:05         | 2:10         | 2:15     | 2:20       | 2:25        |
|              | 2:30        | 2:40      | 2:45      | 2:50       | 2:55       | 3:00                     | 3:05         | 3:10         | 3:15     | 3:20       | 3:25        |
|              | 3:30        | 3:40      | 3:45      | 3:50       | 3:55       | 4:00                     | 4:05         | 4:10         | 4:15     | 4:20       | 4:25        |
|              | 4:30        | 4:40      | 4:45      | 4:50       | 4:55       | 5:00                     | 5:05         | 5:10         | 5:15     | 5:20       | 5:25        |
|              | 5:30        | 5:40      | 5:45      | 5:50       | 5:55       | 6:00                     | 6:05         | 6:10         | 6:15     | 6:20       | 6:25        |
|              | 6:30        | 6:40      | 6:45      | 6:50       | 6:55       | 7:00                     | 7:05         | 7:10         | 7:15     | 7:20       | 7:25        |
|              | 7:30        | 7:40      | 7:45      | 7:50       | 7:55       | 8:00                     | 8:05         | 8:10         | 8:15     | 8:20       | 8:25        |
|              | 8:30        | 8:40      | 8:45      | 8:50       | 8:55       | 9:00                     | 9:05         | 9:10         | 9:15     | 9:20       | 9:25        |
|              | 9:30        | 9:40      | 9:45      | 9:50       | 9:55       | 10:00                    | 10:05        | 10:10        | 10:15    | 10:20      | 10:25       |
|              | 10:30       | 10:40     | 10:45     | 10:50      | 10:55      | 11:00                    | 11:05        | 11:10        | 11:15    | 11:20      | 11:25       |
|              | 11:30       | 11:40     | 11:45     | 11:50      | 11:55      | 12:00                    | 12:05        | 12:10        | 12:15    | 12:20      | 12:25       |
|              | 12:30       | 12:40     | 12:45     | 12:50      | 12:55      | 13:00                    | 13:05        | 13:10        | 13:15    | 13:20      | 13:25       |
|              | 1:30        | 1:40      | 1:45      | 1:50       | 1:55       | 2:00                     | 2:05         | 2:10         | 2:15     | 2:20       | 2:25        |
|              | 2:30        | 2:40      | 2:45      | 2:50       | 2:55       | 3:00                     | 3:05         | 3:10         | 3:15     | 3:20       | 3:25        |
|              | 3:30        | 3:40      | 3:45      | 3:50       | 3:55       | 4:00                     | 4:05         | 4:10         | 4:15     | 4:20       | 4:25        |
|              | 4:30        | 4:40      | 4:45      | 4:50       | 4:55       | 5:00                     | 5:05         | 5:10         | 5:15     | 5:20       | 5:25        |
|              | 5:30        | 5:40      | 5:45      | 5:50       | 5:55       | 6:00                     | 6:05         | 6:10         | 6:15     | 6:20       | 6:25        |
|              | 6:30        | 6:40      | 6:45      | 6:50       | 6:55       | 7:00                     | 7:05         | 7:10         | 7:15     | 7:20       | 7:25        |
|              | 7:30        | 7:40      | 7:45      | 7:50       | 7:55       | 8:00                     | 8:05         | 8:10         | 8:15     | 8:20       | 8:25        |
|              | 8:30        | 8:40      | 8:45      | 8:50       | 8:55       | 9:00                     | 9:05         | 9:10         | 9:15     | 9:20       | 9:25        |
|              | 9:30        | 9:40      | 9:45      | 9:50       | 9:55       | 10:00                    | 10:05        | 10:10        | 10:15    | 10:20      | 10:25       |
|              | 10:30       | 10:40     | 10:45     | 10:50      | 10:55      | 11:00                    | 11:05        | 11:10        | 11:15    | 11:20      | 11:25       |
|              | 11:30       | 11:40     | 11:45     | 11:50      | 11:55      | 12:00                    | 12:05        | 12:10        | 12:15    | 12:20      | 12:25       |
|              | 12:30       | 12:40     | 12:45     | 12:50      | 12:55      | 13:00                    | 13:05        | 13:10        | 13:15    | 13:20      | 13:25       |
|              | 1:30        | 1:40      | 1:45      | 1:50       | 1:55       | 2:00                     | 2:05         | 2:10         | 2:15     | 2:20       | 2:25        |
|              | 2:30        | 2:40      | 2:45      | 2:50       | 2:55       | 3:00                     | 3:05         | 3:10         | 3:15     | 3:20       | 3:25        |
|              | 3:30        | 3:40      | 3:45      | 3:50       | 3:55       | 4:00                     | 4:05         | 4:10         | 4:15     | 4:20       | 4:25        |
|              | 4:30        | 4:40      | 4:45      | 4:50       | 4:55       | 5:00                     | 5:05         | 5:10         | 5:15     | 5:20       | 5:25        |
|              | 5:30        | 5:40      | 5:45      | 5:50       | 5:55       | 6:00                     | 6:05         | 6:10         | 6:15     | 6:20       | 6:25        |
|              | 6:30        | 6:40      | 6:45      | 6:50       | 6:55       | 7:00                     | 7:05         | 7:10         | 7:15     | 7:20       | 7:25        |
|              | 7:30        | 7:40      | 7:45      | 7:50       | 7:55       | 8:00                     | 8:05         | 8:10         | 8:15     | 8:20       | 8:25        |
|              | 8:30        | 8:40      | 8:45      | 8:50       | 8:55       | 9:00                     | 9:05         | 9:10         | 9:15     | 9:20       | 9:25        |
|              | 9:30        | 9:40      | 9:45      | 9:50       | 9:55       | 10:00                    | 10:05        | 10:10        | 10:15    | 10:20      | 10:25       |
|              | 10:30       | 10:40     | 10:45     | 10:50      | 10:55      | 11:00                    | 11:05        | 11:10        | 11:15    | 11:20      | 11:25       |
|              | 11:30       | 11:40     | 11:45     | 11:50      | 11:55      | 12:00                    | 12:05        | 12:10        | 12:15    | 12:20      | 12:25       |
|              | 12:30       | 12:40     | 12:45     | 12:50      | 12:55      | 13:00                    | 13:05        | 13:10        | 13:15    | 13:20      | 13:25       |
|              | 1:30        | 1:40      | 1:45      | 1:50       | 1:55       | 2:00                     | 2:05         | 2:10         | 2:15     | 2:20       | 2:25        |
|              | 2:30        | 2:40      | 2:45      | 2:50       | 2:55       | 3:00                     | 3:05         | 3:10         | 3:15     | 3:20       | 3:25        |
|              | 3:30        | 3:40      | 3:45      | 3:50       | 3:55       | 4:00                     | 4:05         | 4:10         | 4:15     | 4:20       | 4:25        |
|              | 4:30        | 4:40      | 4:45      | 4:50       | 4:55       | 5:00                     | 5:05         | 5:10         | 5:15     | 5:20       | 5:25        |
|              | 5:30        | 5:40      | 5:45      | 5:50       | 5:55       | 6:00                     | 6:05         | 6:10         | 6:15     | 6:20       | 6:25        |
|              | 6:30        | 6:40      | 6:45      | 6:50       | 6:55       | 7:00                     | 7:05         | 7:10         | 7:15     | 7:20       | 7:25        |
|              | 7:30        | 7:40      | 7:45      | 7:50       | 7:55       | 8:00                     | 8:05         | 8:10         | 8:15     | 8:20       | 8:25        |
|              | 8:30        | 8:40      | 8:45      | 8:50       | 8:55       | 9:00                     | 9:05         | 9:10         | 9:15     | 9:20       | 9:25        |
|              | 9:30        | 9:40      | 9:45      | 9:50       | 9:55       | 10:00                    | 10:05        | 10:10        | 10:15    | 10:20      | 10:25       |
|              | 10:30       | 10:40     | 10:45     | 10:50      | 10:55      | 11:00                    | 11:05        | 11:10        | 11:15    | 11:20      | 11:25       |
|              | 11:30       | 11:40     | 11:45     | 11:50      | 11:55      | 12:00                    | 12:05        | 12:10        | 12:15    | 12:20      | 12:25       |
|              | 12:30       | 12:40     | 12:45     | 12:50      | 12:55      | 13:00                    | 13:05        | 13:10        | 13:15    | 13:20      | 13:25       |
|              | 1:30        | 1:40      | 1:45      | 1:50       | 1:55       | 2:00                     | 2:05         | 2:10         | 2:15     | 2:20       | 2:25        |
|              | 2:30        | 2:40      | 2:45      | 2:50       | 2:55       | 3:00                     | 3:05         | 3:10         | 3:15     | 3:20       | 3:25        |
|              | 3:30        | 3:40      | 3:45      | 3:50       | 3:55       | 4:00                     | 4:05         | 4:10         | 4:15     | 4:20       | 4:25        |
|              | 4:30        | 4:40      | 4:45      | 4:50       | 4:55       | 5:00                     | 5:05         | 5:10         | 5:15     | 5:20       | 5:25        |
|              | 5:30        | 5:40      | 5:45      | 5:50       | 5:55       | 6:00                     | 6:05         | 6:10         | 6:15     | 6:20       | 6:25        |
|              | 6:30        | 6:40      | 6:45      | 6:50       | 6:55       | 7:00                     | 7:05         | 7:10         | 7:15     | 7:20       | 7:25        |
|              | 7:30        | 7:40      | 7:45      | 7:50       | 7:55       | 8:00                     | 8:05         | 8:10         | 8:15     | 8:20       | 8:25        |
|              | 8:30        | 8:40      | 8:45      | 8:50       | 8:55       | 9:00                     | 9:05         | 9:10         | 9:15     | 9:20       | 9:25        |
|              | 9:30        | 9:40      | 9:45      | 9:50       | 9:55       | 10:00                    | 10:05        | 10:10        | 10:15    | 10:20      | 10:25       |
|              | 10:30       | 10:40     | 10:45     | 10:50      | 10:55      | 11:00                    | 11:05        | 11:10        | 11:15    | 11:20      | 11:25       |
|              | 11:30       | 11:40     | 11:45     | 11:50      | 11:55      | 12:00                    | 12:05        | 12:10        | 12:15    | 12:20      | 12:25       |
|              | 12:30       | 12:40     | 12:45     | 12:50      | 12:55      | 13:00                    | 13:05        | 13:10        | 13:15    | 13:20      | 13:25       |
|              | 1:30        | 1:40      | 1:45      | 1:50       | 1:55       | 2:00                     | 2:05         | 2:10         | 2:15     | 2:20       | 2:25        |
|              | 2:30        | 2:40      | 2:45      | 2:50       | 2:55       | 3:00                     | 3:05         | 3:10         | 3:15     | 3:20       | 3:25        |
|              | 3:30        | 3:40      | 3:45      | 3:50       | 3:55       | 4:00                     | 4:05         | 4:10         | 4:15     | 4:20       | 4:25        |
|              | 4:30        | 4:40      | 4:45      | 4:50       | 4:55       | 5:00                     | 5:05         | 5:10         | 5:15     | 5:20       | 5:25        |
|              | 5:30        | 5:40      | 5:45      | 5:50       | 5:55       | 6:00                     | 6:05         | 6:10         | 6:15     | 6:20       | 6:25        |
|              | 6:30        | 6:40      | 6:45      | 6:50       | 6:55       | 7:00                     | 7:05         | 7:10         | 7:15     | 7:20       | 7:25        |
|              | 7:30        | 7:40      | 7:45      | 7:50       | 7:55       | 8:00                     | 8:05         | 8:10         | 8:15     | 8:20       | 8:25        |
|              | 8:30        | 8:40      | 8:45      | 8:50       | 8:55       | 9:00                     | 9:05         | 9:10         | 9:15     | 9:20       | 9:25        |
|              | 9:30        | 9:40      | 9:45      | 9:50       | 9:55       | 10:00                    | 10:05        | 10:10        | 10:15    | 10:20      | 10:25       |
|              | 10:30       | 10:40     | 10:45     | 10:50      | 10:55      | 11:00                    | 11:05        | 11:10        | 11:15    | 11:20      | 11:25       |
|              | 11:30       | 11:40     | 11:45     | 11:50      | 11:55      | 12:00                    | 12:05        | 12:10        | 12:15    | 12:20      | 12:25       |
|              | 12:30       | 12:40     | 12:45     | 12:50      | 12:55      | 13:00                    | 13:05        | 13:10        | 13:15    | 13:20      | 13:25       |
|              | 1:30        | 1:40      | 1:45      | 1:50       | 1:55       | 2:00                     | 2:05         | 2:10         | 2:15     | 2:20       | 2:25        |
|              | 2:30        | 2:40      | 2:45      | 2:50       | 2:55       | 3:00                     | 3:05         | 3:10         | 3:15     | 3:20       | 3:25        |
|              | 3:30        | 3:40      | 3:45      | 3:50       | 3:55       | 4:00                     | 4:05         | 4:10         | 4:15     | 4:20       | 4:25        |
|              | 4:30        | 4:40      | 4:45      | 4:50       | 4:55       | 5:00                     | 5:05         | 5:10         | 5:15     | 5:20       | 5:25        |
|              | 5:30        | 5:40      | 5:45      | 5:50       | 5:55       | 6:00                     | 6:05         | 6:10         | 6:15     | 6:20       | 6:25        |
|              | 6:30        | 6:40      | 6:45      | 6:50       | 6:55       | 7:00                     | 7:05         | 7:1          |          |            |             |

## Jefferson Transit Olympic Connection

| Weekdays ⇒ Southbound ⇒ Forks ⇒ Kalaloch ⇒ Queets ⇒ Amanda Park at Lake Quinalt |                              |                  |                          |                 |                 |               |                   |                               |   |
|---|------------------------------|------------------|--------------------------|-----------------|-----------------|---------------|-------------------|-------------------------------|---|
| See Clallam Transit Schedule for Connection Information from Port Angeles.      | Depart Forks Transfer Center | Upper Hoh Rd (F) | Depart Hoh Tribal Center | Cedar Creek (F) | Depart Kalaloch | Depart Queets | Clearwater Rd (F) | Arrive Amanda Park Mercantile | See Grays Harbor Transit Schedule for Connection Information to Aberdeen/Hoquiam. |
|   | 7:00 AM                      | 7:14 AM          | 7:32 AM                  | 7:38 AM         | 7:56 AM         | 8:02 AM       | 8:07 AM           | 8:27 AM                       |   |
|   | 11:05 AM                     | 11:19 AM         | 11:37 AM                 | 11:43 AM        | 12:01 PM        | 12:07 PM      | 12:12 PM          | 12:32 PM                      |   |
|   | 2:45 PM                      | 2:59 PM          | 3:17 PM                  | 3:23 PM         | 3:41 PM         | 3:47 PM       | 3:52 PM           | 4:12 PM                       |   |
|   | 6:45 PM                      | 6:59 PM          | 7:17 PM                  | 7:23 PM         | 7:41 PM         | 8:00 PM       |                   |                               |   |

| Weekdays ⇒ Northbound ⇒ Amanda Park at Lake Quinalt ⇒ Queets ⇒ Kalaloch ⇒ Forks     |                               |                   |               |                 |                 |                          |                  |                              |  |
|---|-------------------------------|-------------------|---------------|-----------------|-----------------|--------------------------|------------------|------------------------------|--|
| See Grays Harbor Transit Schedule for Connection Information from Aberdeen/Hoquiam. | Depart Amanda Park Mercantile | Clearwater Rd (F) | Depart Queets | Depart Kalaloch | Cedar Creek (F) | Depart Hoh Tribal Center | Upper Hoh Rd (F) | Arrive Forks Transfer Center | See Clallam Transit Schedule for Connection Information To Port Angeles. |
|   | 8:48 AM                       | 9:08 AM           | 9:13 AM       | 9:30 AM         | 9:41 AM         | 9:47 AM                  | 10:05 AM         | 10:19 AM                     |  |
|   | 12:53 PM                      | 1:13 PM           | 1:18 PM       | 1:35 PM         | 1:46 PM         | 1:52 PM                  | 2:10 PM          | 2:24 PM                      |  |
|   | 4:23 PM                       | 4:43 PM           | 4:48 PM       | 5:05 PM         | 5:16 PM         | 5:22 PM                  | 5:40 PM          | 5:54 PM                      |  |
|   |                               |                   | 8:00 PM       | 8:06 PM         | 8:17 PM         | 8:23 PM                  | 8:41 PM          | 8:55 PM                      |  |

| Saturdays ⇒ Southbound ⇒ Forks ⇒ Kalaloch ⇒ Queets ⇒ Amanda Park at Lake Quinalt |                              |                  |                          |                 |                 |               |                   |                               |   |
|--|------------------------------|------------------|--------------------------|-----------------|-----------------|---------------|-------------------|-------------------------------|---|
| See Clallam Transit Schedule for Connection Information from Port Angeles.       | Depart Forks Transfer Center | Upper Hoh Rd (F) | Depart Hoh Tribal Center | Cedar Creek (F) | Depart Kalaloch | Depart Queets | Clearwater Rd (F) | Arrive Amanda Park Mercantile | See Grays Harbor Transit Schedule For Connection Information from Aberdeen/Hoquiam. |
|  | 7:20 AM                      | 7:34 AM          | 7:52 AM                  | 7:58 AM         | 8:16 AM         | 8:22 AM       | 8:27 AM           | 8:47 AM                       |   |
|  | 2:40 PM                      | 2:54 PM          | 3:12 PM                  | 3:18 PM         | 3:36 PM         | 3:42 PM       | 3:47 PM           | 4:07 PM                       |   |

| Saturdays ⇒ Northbound ⇒ Amanda Park at Lake Quinalt ⇒ Queets ⇒ Kalaloch ⇒ Forks    |                               |                   |               |                 |                 |                          |                  |                              |  |
|---|-------------------------------|-------------------|---------------|-----------------|-----------------|--------------------------|------------------|------------------------------|--|
| See Grays Harbor Transit Schedule for Connection Information from Aberdeen/Hoquiam. | Depart Amanda Park Mercantile | Clearwater Rd (F) | Depart Queets | Depart Kalaloch | Cedar Creek (F) | Depart Hoh Tribal Center | Upper Hoh Rd (F) | Arrive Forks Transfer Center | See Clallam Transit Schedule for Connection Information to Port Angeles. |
|   | 9:10 AM                       | 9:30 AM           | 9:35 AM       | 9:48 AM         | 9:59 AM         | 10:05 AM                 | 10:23 AM         | 10:37 AM                     |  |
|   | 4:23 PM                       | 4:43 PM           | 4:48 PM       | 5:05 PM         | 5:16 PM         | 5:22 PM                  | 5:40 PM          | 5:54 PM                      |  |

(F) Flag Stop - Bus will stop when flagged down by rider. Flag stop times are approximate, be there a few minutes before published time. When flagging a bus during evening hours, use a bright flashlight and swing in large arc; riders can be difficult to see in the dark.



### HAVE YOUR FARE READY

50¢ Adults

25¢ Youths—18/Under  
Seniors—Over 60  
Disabled

Free Children—6/Under  
**EXACT CHANGE REQUIRED**

### HOLIDAY SERVICE

NO SERVICE IS PROVIDED ON:

- New Year's Day
- Memorial Day
- July 4th
- Labor Day
- Thanksgiving
- Christmas



The Olympic Connection is also sponsored by:

**JEFFERSON TRANSIT**  
 1615 W. Sims Way  
 Port Townsend, WA 98368

**CLALLAM TRANSIT SYSTEM**

# JEFFERSON TRANSIT

## TRANSIT

### OLYMPIC CONNECTION

**CALL 1-800-371-0497**  
 Visit us on the web at:  
[www.jeffersontransit.com](http://www.jeffersontransit.com)

|                         |                |
|-------------------------|----------------|
| JEFFERSON TRANSIT       | 1-360-385-4777 |
| Olympic Connection      | 1-800-371-0497 |
| TDD/TTY                 | 1-800-833-6388 |
| Grays Harbor Transit    | 1-800-562-9730 |
| Clallam Transit         | 1-800-858-3747 |
| Medicaid Transportation | 1-800-756-5438 |

Jefferson Transit Olympic Connection is a public, route-deviated, fully accessible transportation service operating between Forks and Amanda Park (at Lake Quinault) on Highway 101. This system connects West Jefferson County to transportation systems in Grays Harbor and Clallam Counties, providing full access to communities on the Olympic Peninsula.

#### Route Deviations

The Olympic Connection will deviate to locations within ¼ mile of Highway 101, upon request. To request a deviation, call **1-800-371-0497** between 6:00 a.m. and 5:00 p.m., Monday through Saturday. Requests for deviation from the regular route must be received no later than 40 minutes before the desired trip departs from Forks. It is preferable for requests to be made 24 hours in advance to assure coordination with the driver. Due to time and travel constraints, deviations may be limited. When calling to request a deviation, you will be asked your name, address, destination address (when applicable), telephone number and desired pickup time. If you need to cancel your requested ride, please notify us as soon as possible.

#### How to Catch the Bus

Bus stop locations at the Forks Transfer Station, Hoh Tribal Center, Kalaloch and Amanda Park are listed on the schedule. You can also catch the bus by flagging the driver with an overhead wave of your hand from a safe location along the roadway. After dark, a reflector or flashlight will help the driver see you better.

#### Connecting Services

Jefferson Transit Olympic Connection makes connections with other local systems. Transfers to Grays Harbor Transit can be made at Amanda Park (North Shore General Store). Transfers to Clallam Transit can be made at the Forks Transfer Center. These services require a small fare and exact change is required. Please refer to the schedule for connection times.

#### Bus Etiquette and Safety

- \* Passengers must remain seated while the bus is in motion and until it comes to a complete stop
- \* Please cross the highway behind – never in front – of the bus.
- \* Follow driver instructions.
- \* Please keep the bus clean!
- \* Drinking, eating and smoking are not permitted on the bus.
- \* Playing a radio is not permitted on the bus.
- \* In compliance with Americans With Disabilities Act regulations, service animals are allowed on buses.
- \* Safety lap belts are available upon request
- \* **Intoxicated persons may be denied service.**

#### Bicycles

The bus is equipped with a bicycle rack. Space is limited.

#### Lost and Found

If you lose an item, please call 374-4104 or 1-800-371-0497

|      |                      |
|------|----------------------|
| 50¢  | Adults               |
| 25¢  | Youths 18 and under  |
|      | Seniors over 60      |
|      | Disabled             |
| Free | Children 6 and under |

**Exact change required.**

|              |   |   |
|--------------|---|---|
| Daily Passes | 75¢   | Travel all day on Jefferson Transit.  |
| Monthly      | \$15.00 Adults<br>\$7.00 Youth, Srs over 60, Disabled | Valid from the 1 <sup>st</sup> day of the month through the 5 <sup>th</sup> day of the following month for unlimited rides. Non-Transferable.   |
| Punch Passes | \$5 or \$10   | The driver deducts the cost of a fare each time you board the bus until the purchase price of the pass has been met. Transferable.  |
| College      | \$30.00   | College students (proof of college enrollment must be presented to purchase a college pass.) Valid for the length of the current academic quarter, as published by the Peninsula College extension site in Forks. |