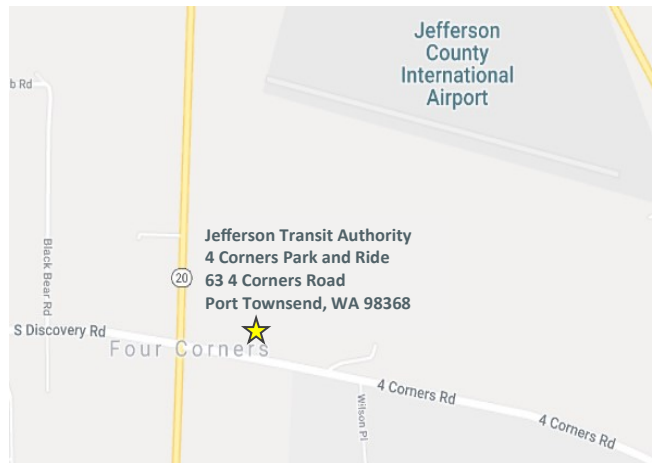




JEFFERSON TRANSIT AUTHORITY



If you have any questions
please feel free to contact
Customer Service at
360.385.4777



Park and Ride Information

Overnight parking is for unoccupied vehicles only & must be pre-approved. You will need to provide the following information to Customer Service at 360.385.4777

- Vehicle make, model, and color
- License plate number
- Your name and contact information
- Drop off and pick up dates

Customer Service hours: 7:00 am to 5:15 pm, Mon-Fri
Be sure to secure your vehicle and belongings. Jefferson Transit is not responsible for lost, stolen or damaged items.



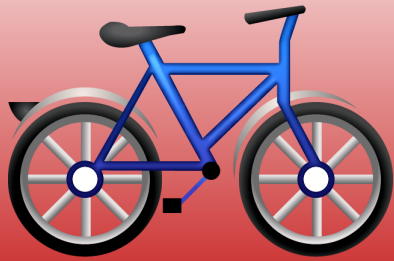
63 4 Corners Park and Ride

Bike Barn

360.385.4777

800.371.0497

www.jeffersontransit.com



BIKE BARN INFORMATION

16 Covered Bike Hooks with Lockers

Jefferson Transit's bike barn is an ungated facility and is open for access 24 hours a day - 7 days a week. The bike hooks and lockers are available on a *"first come, first served"* basis.

Bike Repair Station

Bike tools and a bike tire pump are available for use outside the Bike Barn.

Outside Bike Rack

Jefferson Transit's freestanding bike rack can hold up to 7 bikes and is located outside the Bike Barn.



BIKE BARN FAQs

How do I rent a Bike Hook & Locker?

Bike Hook and Locker Agreements and locks can be obtained at 63 4 Corners Park & Ride Administration office from 9:00 am - 5:00 pm Monday - Friday. When you sign a Bike Locker Agreement you will be assigned a bike hook and locker.

How much does it cost?

There is no charge for this service. However, a \$75.00 refundable security deposit is required.

What is the minimum age?

To secure a locker you must be at least 18 years of age.



BIKES ON BUSES

All of Jefferson Transit's fixed route fleet are equipped with bike racks to transport 2 wheel bicycles. A maximum of two bikes may be allowed on board, if space allows and safety permits.

Types of Bicycles Allowed

Conventional, single seat, 2 wheeled bikes are allowed to be transported on buses. Both wheels must fit into the bike rack wheel slots, and the support arm-hook must fit over the top of the bike wheel.

Tandem, recumbent, 3 wheeled or motor-driven bikes cannot be transported on Jefferson Transit fixed route buses.