



# Jefferson Transit 2023 Service Change



# Introduction

- June 2023
- Fill service gaps\*
- Improve transportation options

\*Additional service dependent on staffing availability.



# Community Outreach

- Presentation
- Survey
- Public Hearing
- Transit Advisory Group
- Tabling
- Community Events
- Social Media
- Flyers/Ads
- Email
- Word of Mouth



# Service Changes

- #1 Brinnon/Quilcene/Tri-Area
- #4 Upper Sims Loop
- #6A Tri-Area Loop
- #7 Poulsbo/Port Ludlow/Tri-Area
- #11A /#11B Port Townsend Shuttles
- #14 Kingston Express
- Dial-A-Ride Services

# #1 Brinnon/Quilcene/Tri-Area Proposed Changes

## Departure Time Change

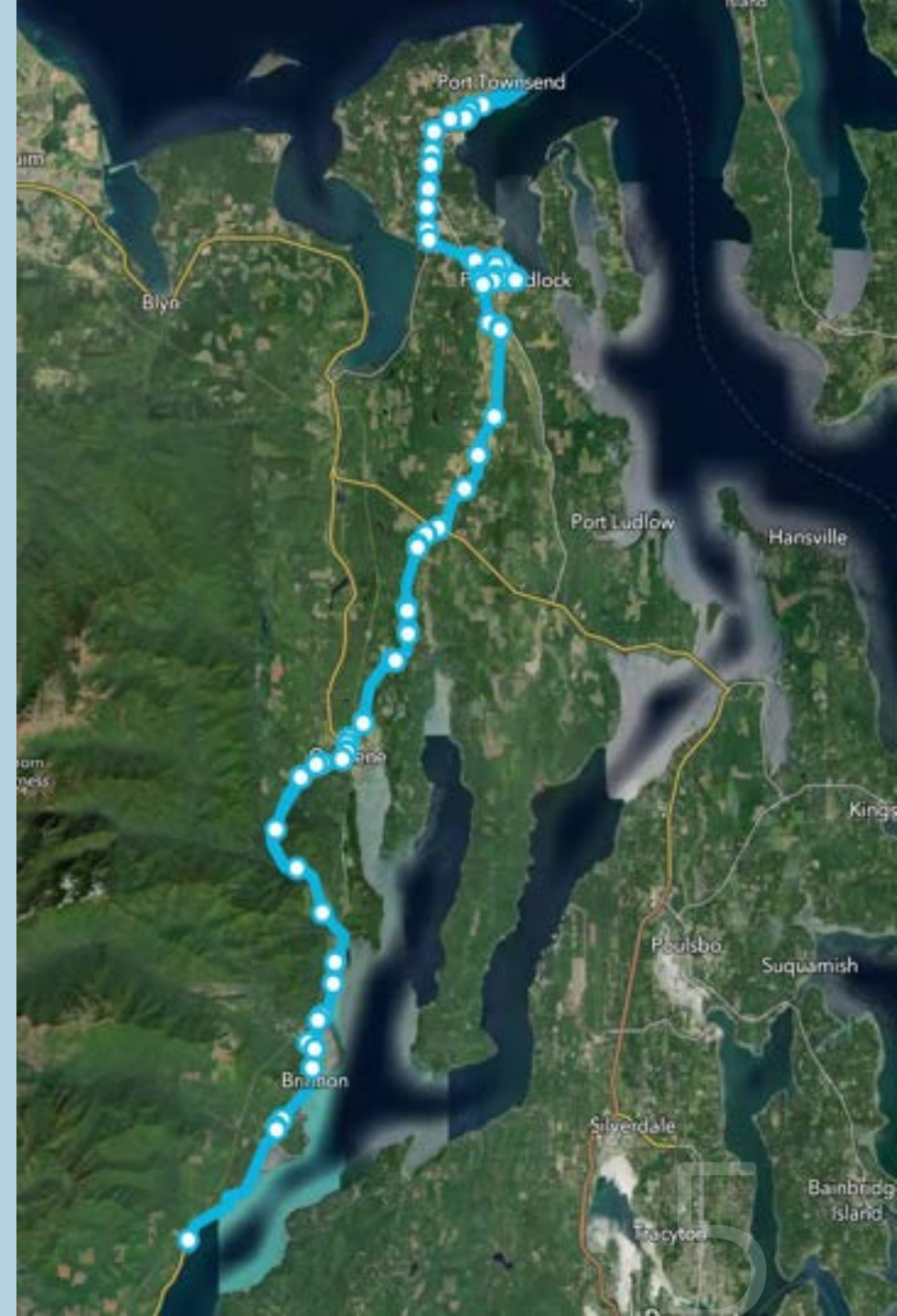
- Earlier departure
- Monday-Friday 5:15 AM

## Departure Location Change

- Haines Place

## Goal:

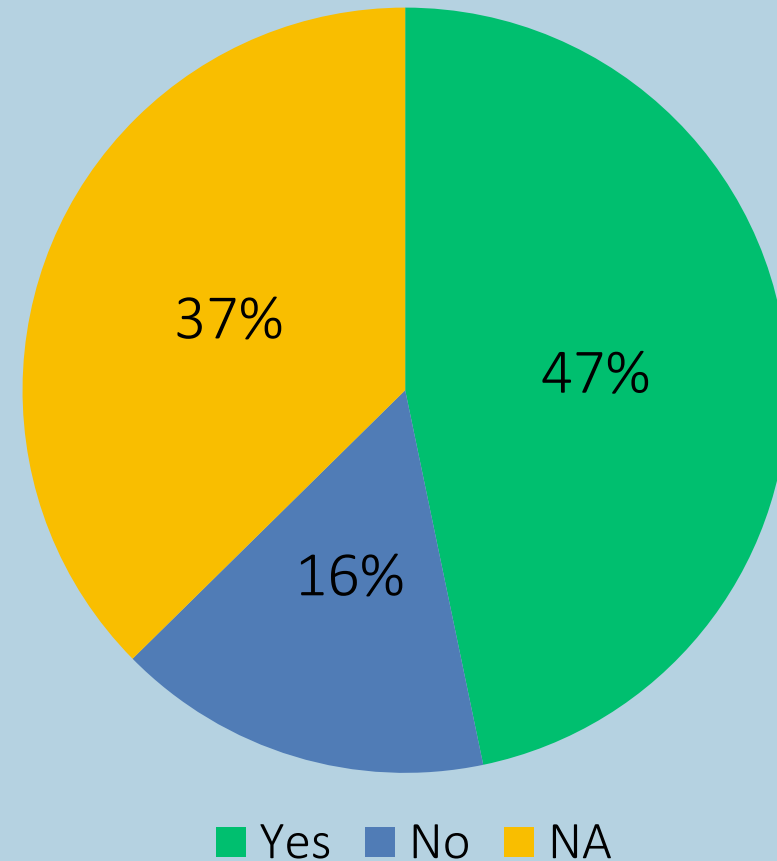
- Assist with community needs
- Direct connection to #14 Kingston Express



# #1 Brinnon/Quilcene/Tri-Area Survey Results

Answered: 107 Skipped: 2

“Jefferson Transit is considering changing the departure time and location on the first #1 Brinnon. Currently, the first departure is at 6:10 AM from 63 4 Corners. The proposed departure is at 5:15 AM from Haines Place and departing 63 4 Corners at 5:25 AM. Would you support this proposed change?”

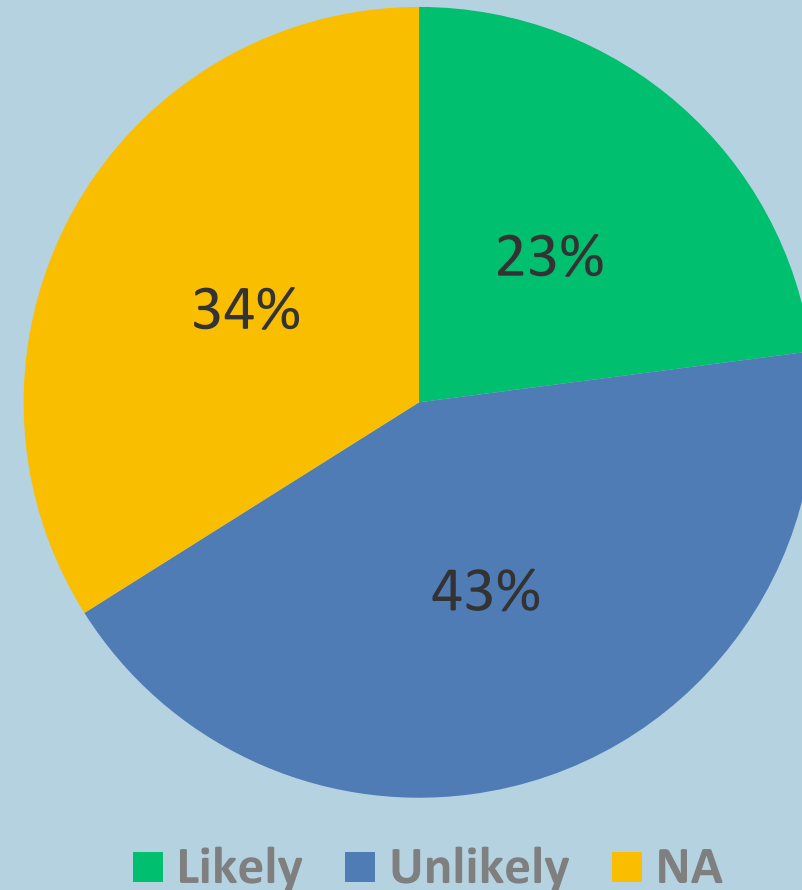




# #1 Brinnon/Quilcene/Tri-Area Survey Results

Answered: 109 Skipped: 0

“The proposed change to the #1 Brinnon would allow for a weekday connection to the #14 Kingston Express at 7:15 am. How likely are you to take advantage of this connection?”



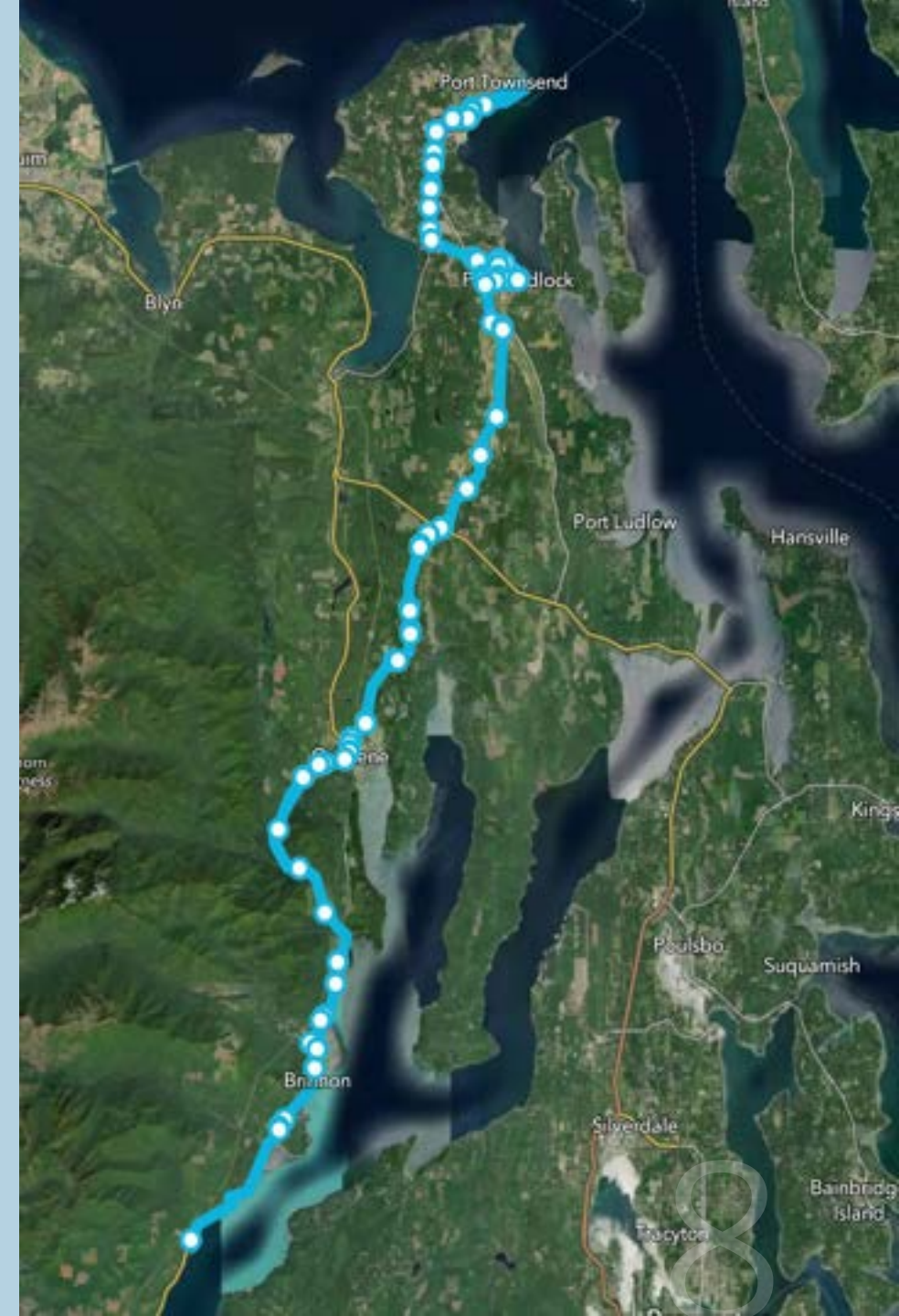
# #1 Brinnon/Quilcene/Tri-Area Recommended Changes

Earlier First Departure:

- Monday-Friday 5:15 AM  
(Haines Place)

Earlier Second Departure:

- Monday-Friday 7:25 AM  
(Haines Place)





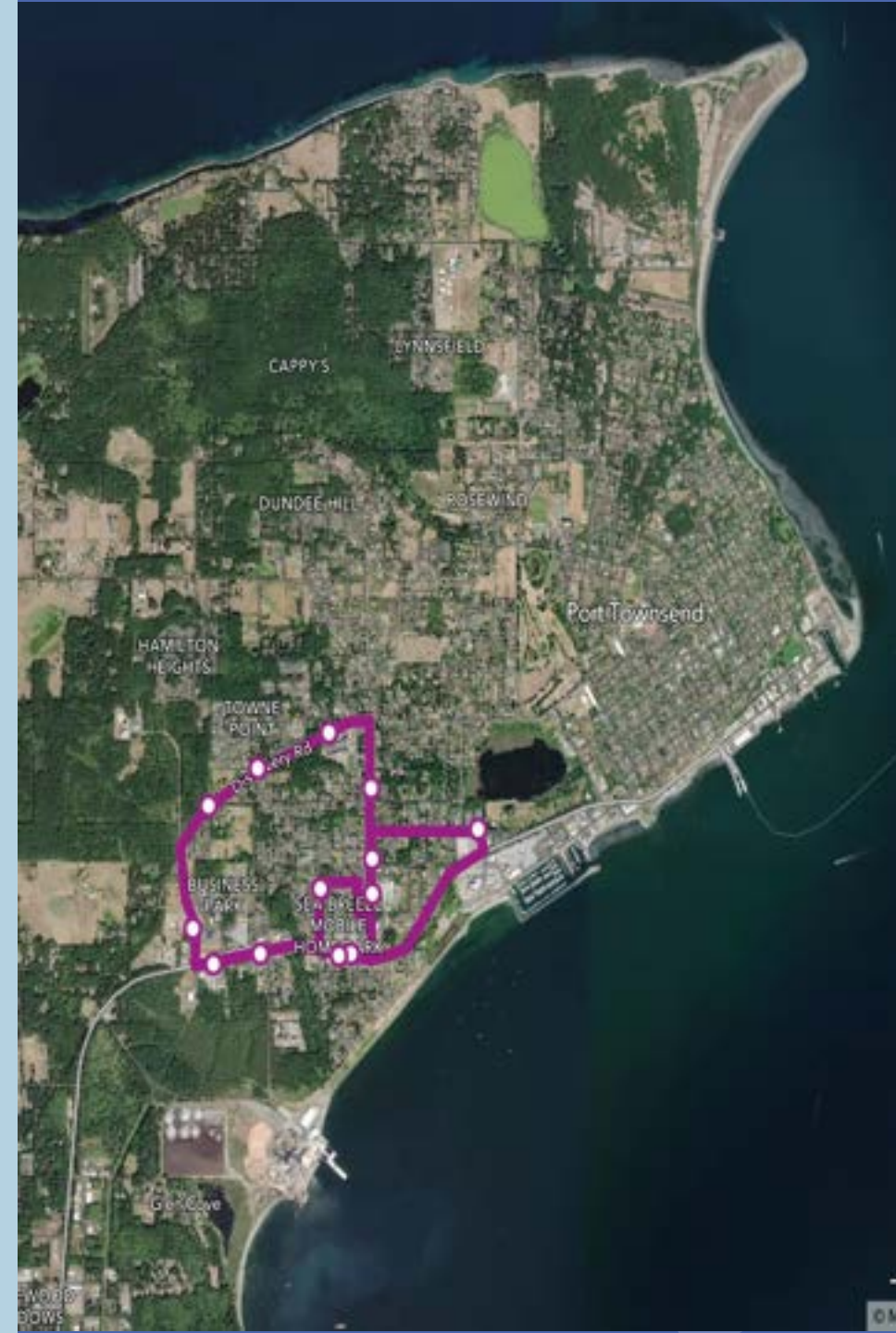
# #4 Upper Sims Loop Proposed Changes

## Additional Service:

- Monday-Friday 7:30 AM, 6:30 PM
- Saturday 8:30 AM, 6:30 PM

## Goal:

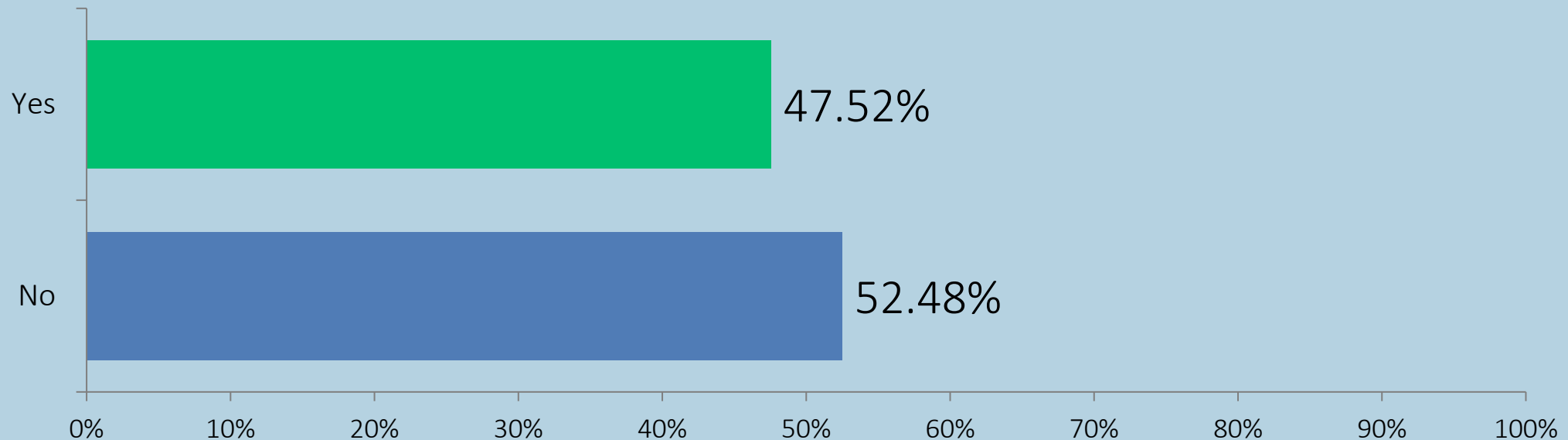
- Expanded hours
- Serve high density area
- Provide essential service



# #4 Upper Sims Loop Survey Results

Answered: 101 Skipped: 8

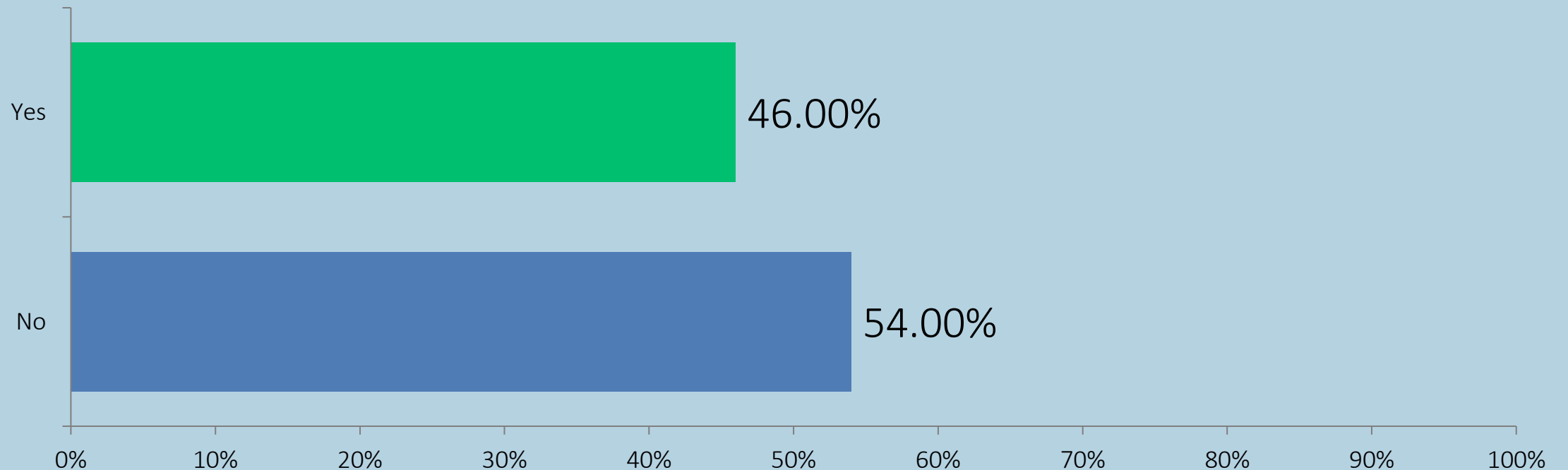
“Jefferson Transit is considering adding 7:30 AM and 6:30 PM service on the #4 Upper Sims Loop Monday through Friday. Would you utilize this service?”



# #4 Upper Sims Loop Survey Results

Answered: 100 Skipped: 9

“Jefferson Transit is considering adding 8:30 AM and 6:30 PM service on the #4 Upper Sims Loop on Saturdays. Would you utilize this service?”

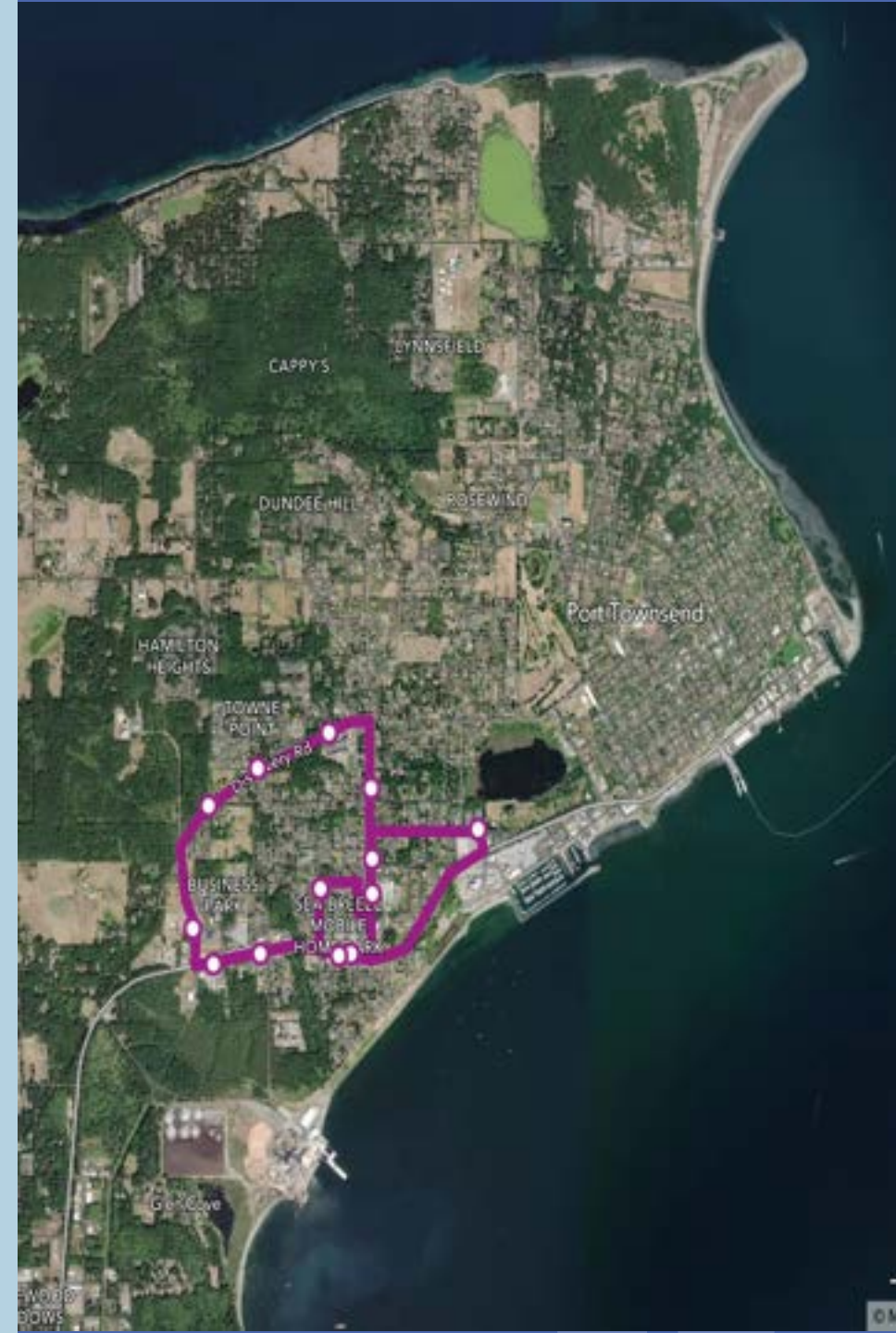




# #4 Upper Sims Loop Recommended Changes

Additional Service:

- Monday-Friday 7:30 AM, 6:30 PM
- Saturday 8:30 AM, 6:45 PM



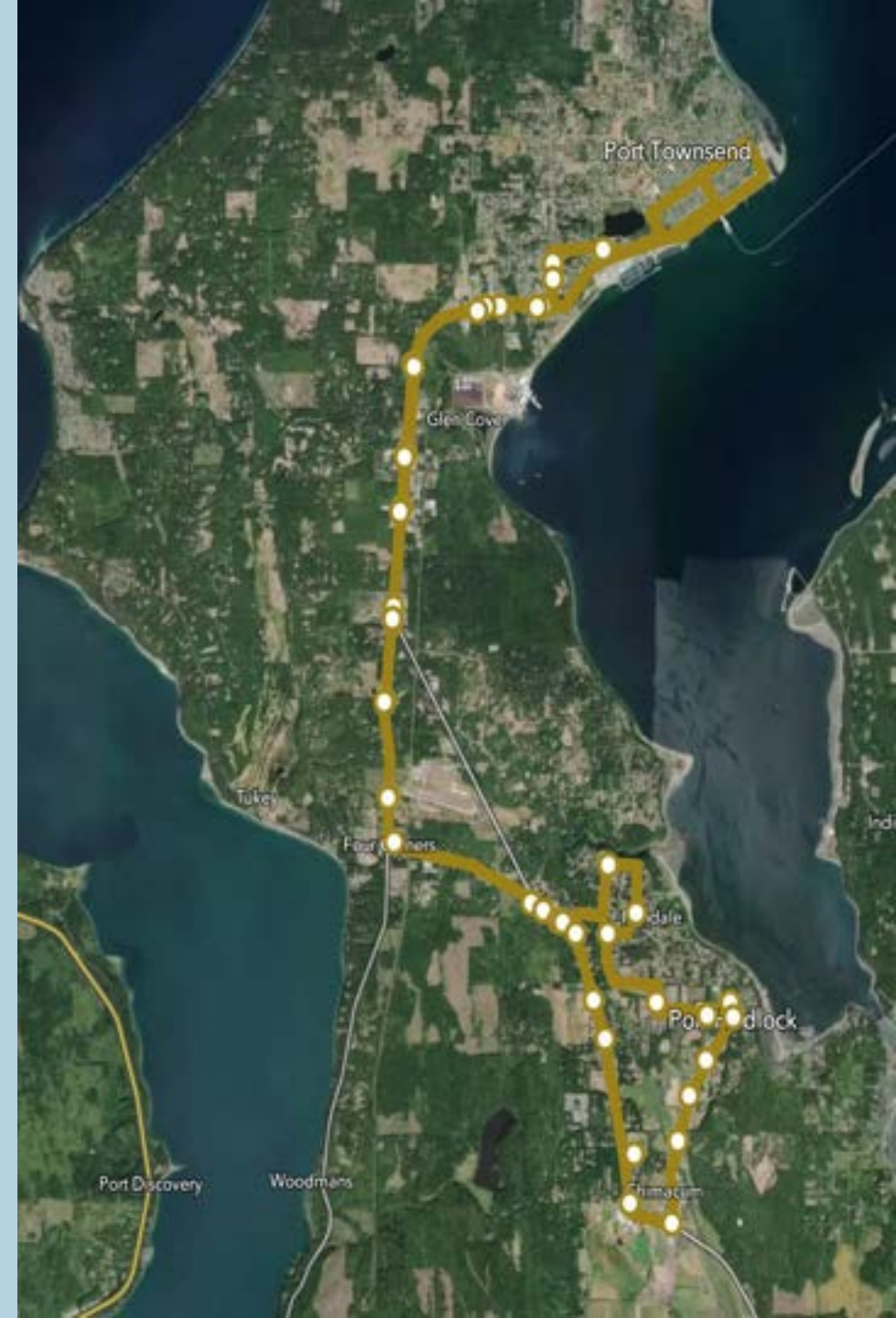
# #6A Tri-Area Loop Proposed Change

Additional Service:

- Saturday 3:00 PM

Goal:

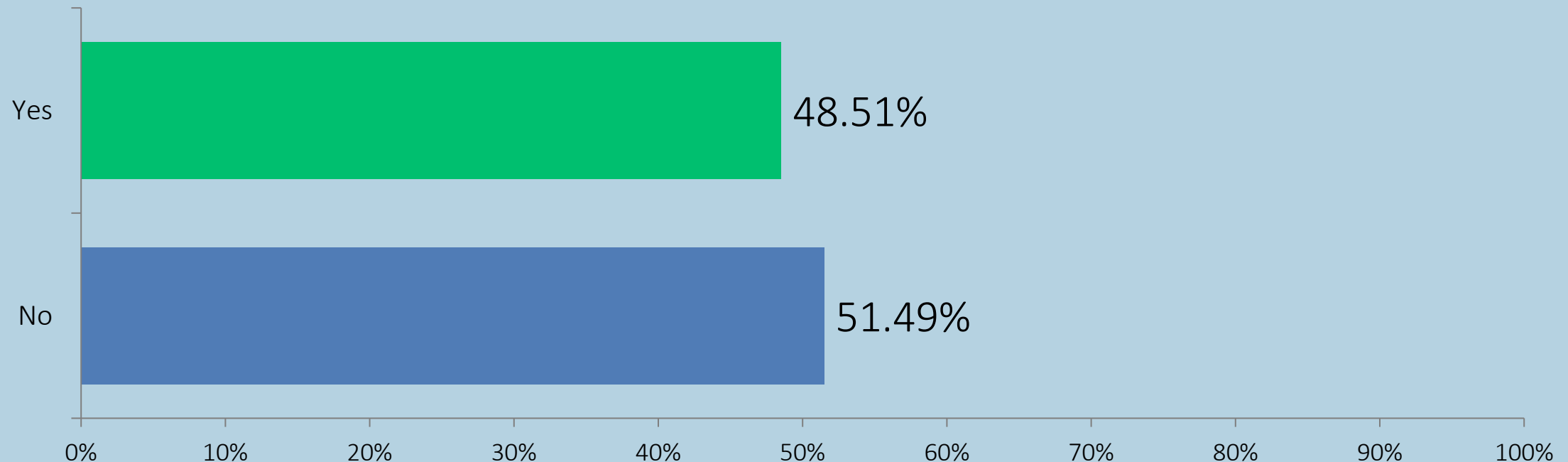
- Add frequency to Tri-Area



# #6A Tri-Area Loop Survey Results

Answered: 101 Skipped: 8

“Jefferson Transit is considering adding 3:00 PM service on the #6A Tri-Area Loop on Saturday. Would you utilize this service?”

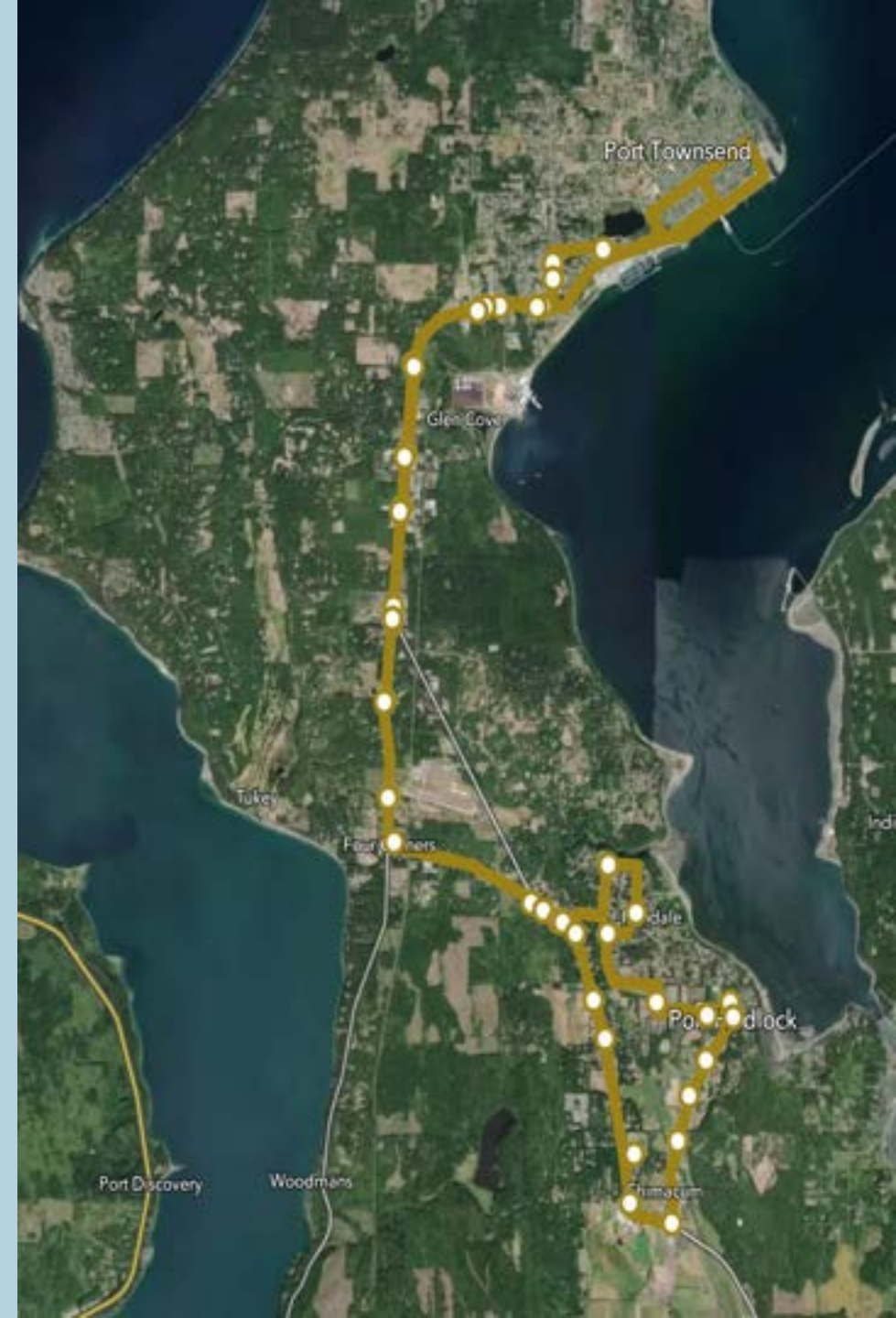




# #6A Tri-Area Loop Recommended Change

Additional Service:

- Saturday 3:00 PM



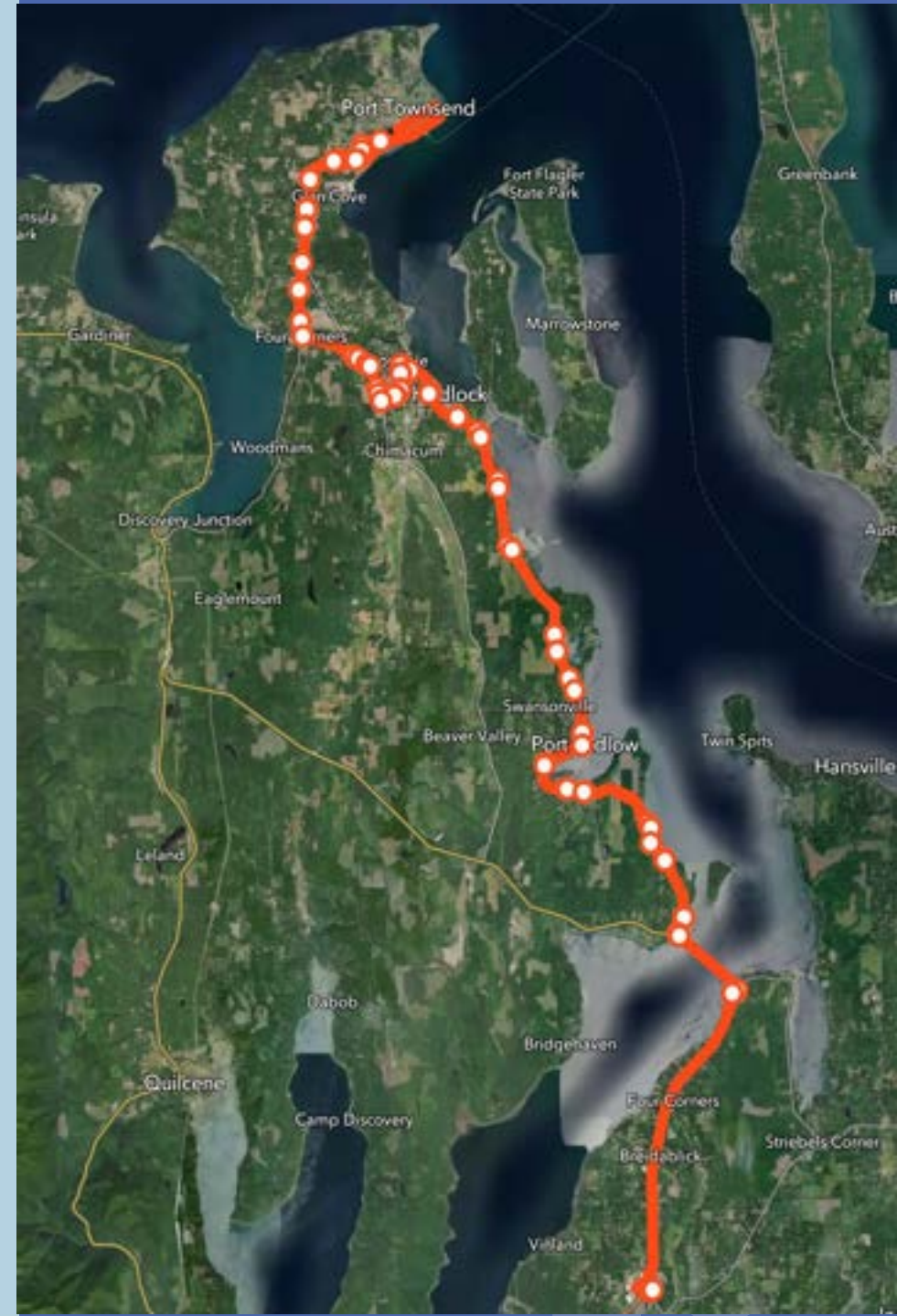
# #7 Poulsbo/Port Ludlow/Tri-Area Proposed Changes

Departure Time Change:

- Monday-Friday 7:05 PM  
(Poulsbo to Port Townsend)

Goal:

- Kitsap Transit connection

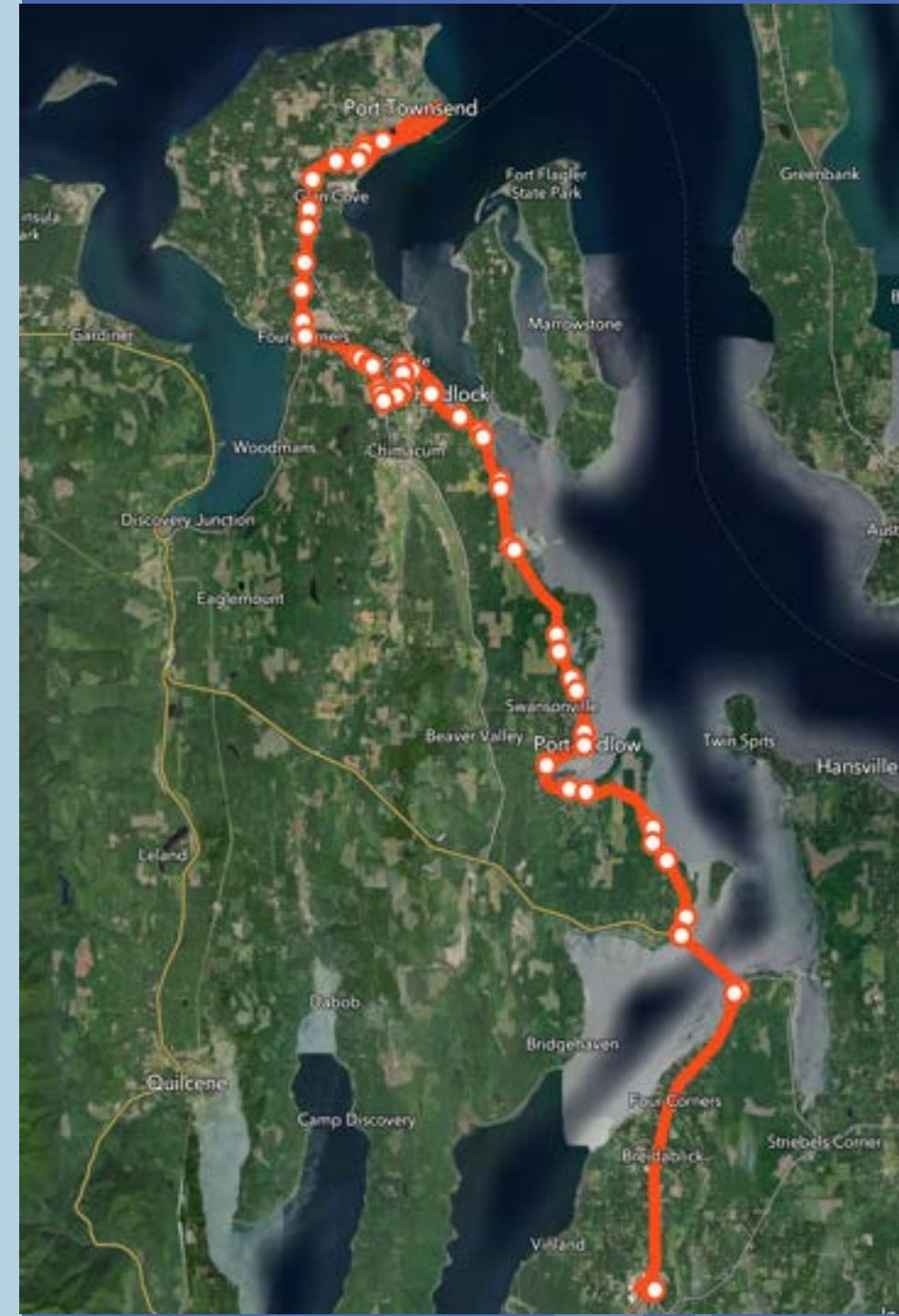




# #7 Poulsbo/Port Ludlow/Tri-Area Recommended Changes

Departure Time Change:

- Monday-Friday 7:05 PM  
(Poulsbo to Port Townsend)





# #11A/B Port Townsend Shuttle Proposed Changes

## Additional Service:

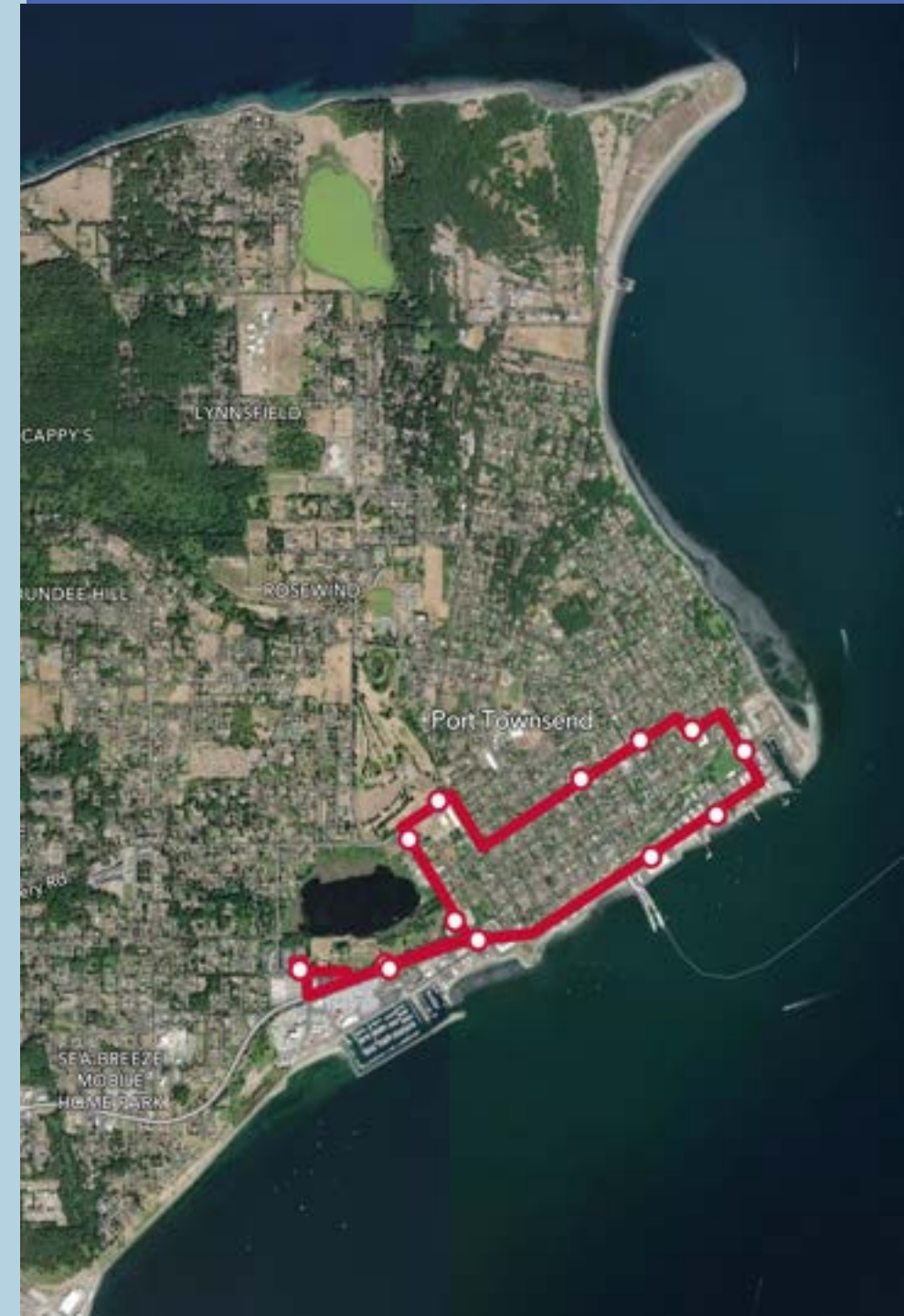
- Monday-Saturday 7:00 PM, 7:30 PM

## Departure Time Change:

- Monday-Friday 8:05 PM

## Goal:

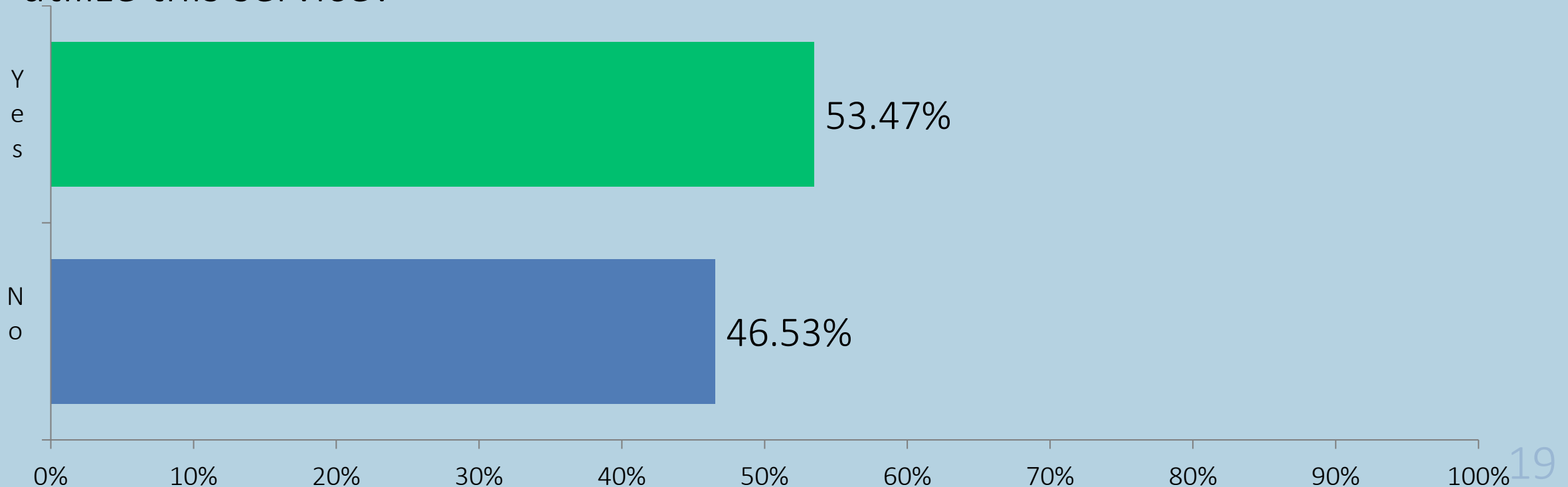
- Add Frequency
- Accommodate the timing changes of the #7



# #11A/B Port Townsend Shuttle Survey Results

Answered: 101 Skipped: 8

“Jefferson Transit is considering adding 7:00 pm and 7:30 pm service on the #11A/B Port Townsend Shuttle Monday through Saturday. Would you utilize this service?”



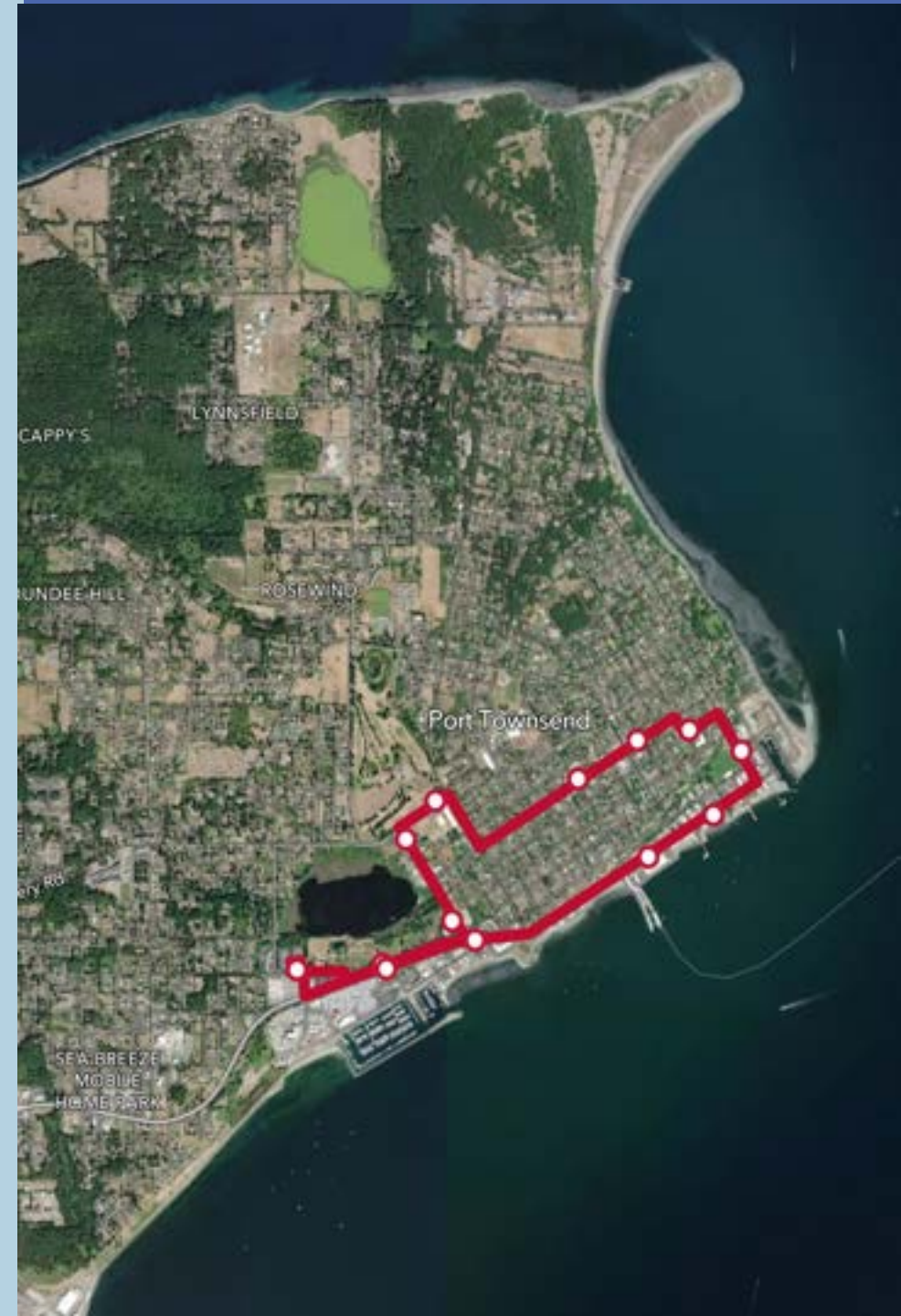
# #11A/B Port Townsend Shuttle Recommended Changes

## Additional Service:

- Monday-Saturday 7:00 PM, 7:30 PM

## Departure Time Change:

- Monday-Friday 8:05 PM





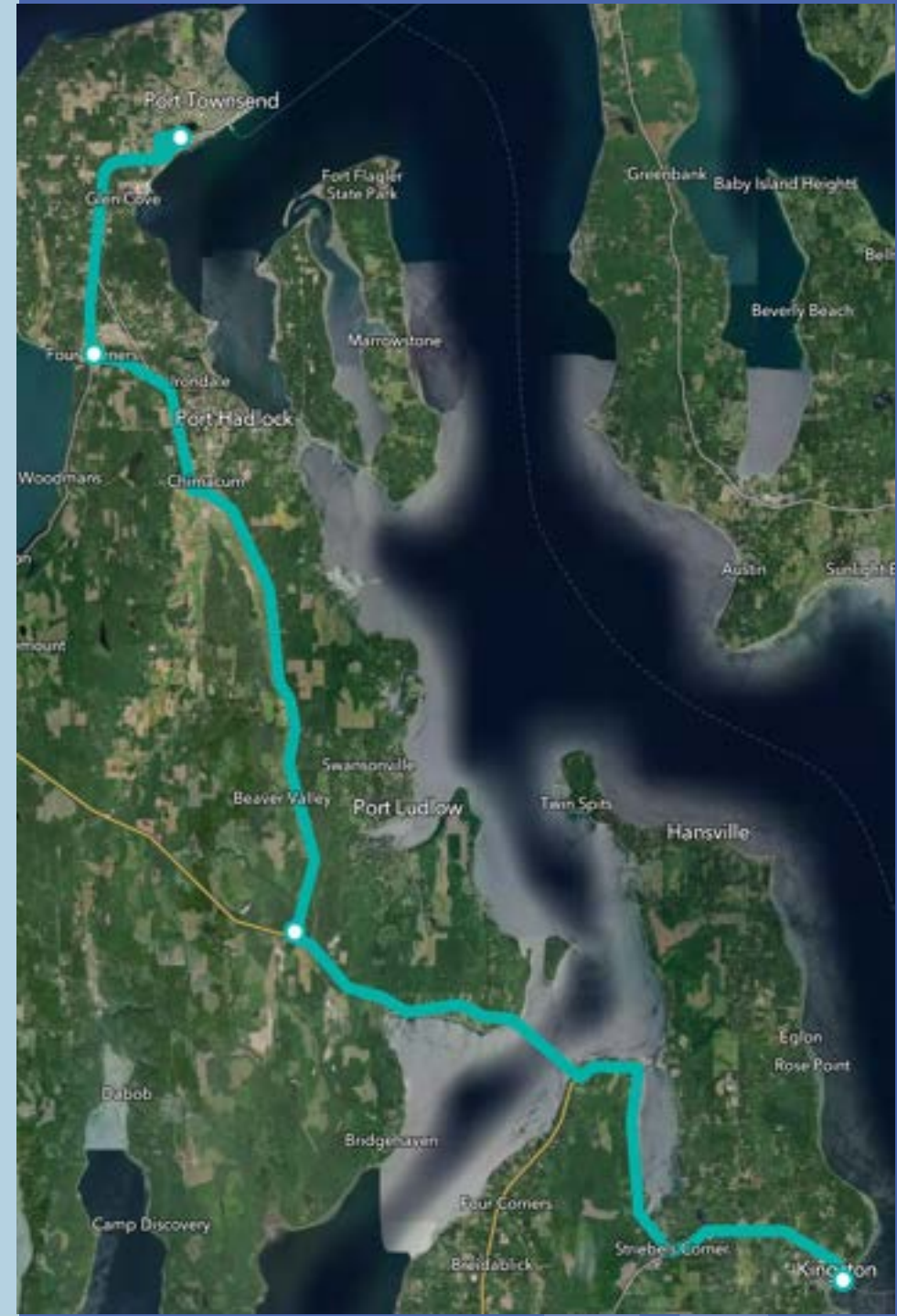
# #14 Kingston Express Proposed Changes

Departure Time Change:

- Saturday 8:35 AM, 4:00 PM

Goal:

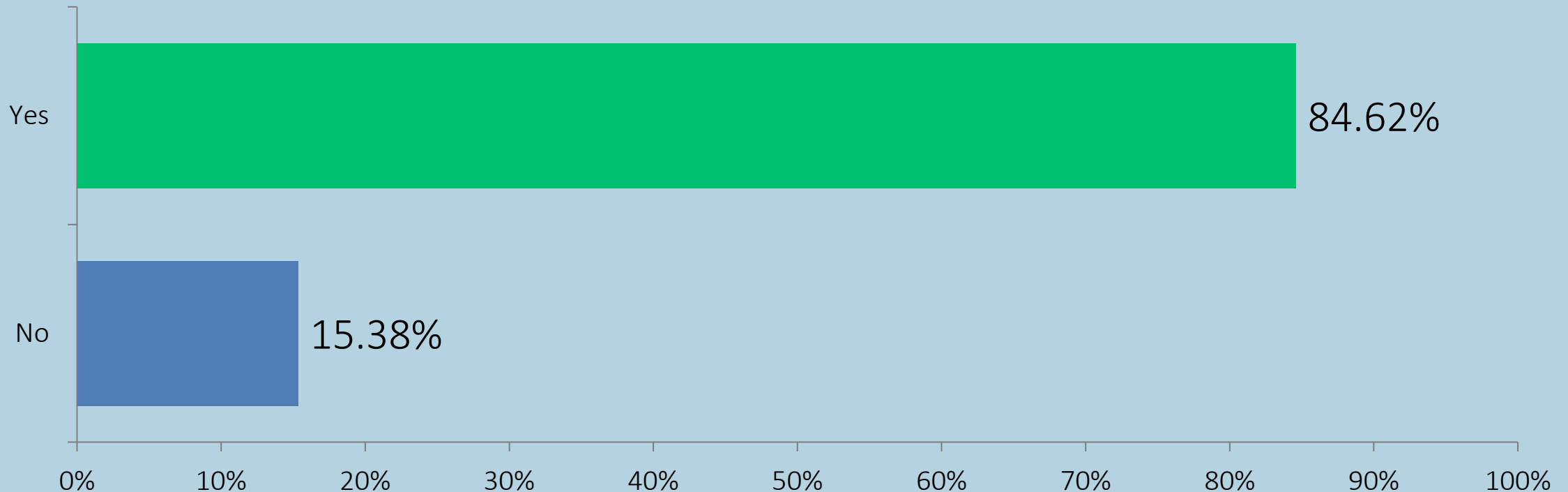
- Align with the summer schedule for Kitsap Transit's Fast Ferry to Seattle



# #14 Kingston Express Survey Results

Answered: 104 Skipped: 5

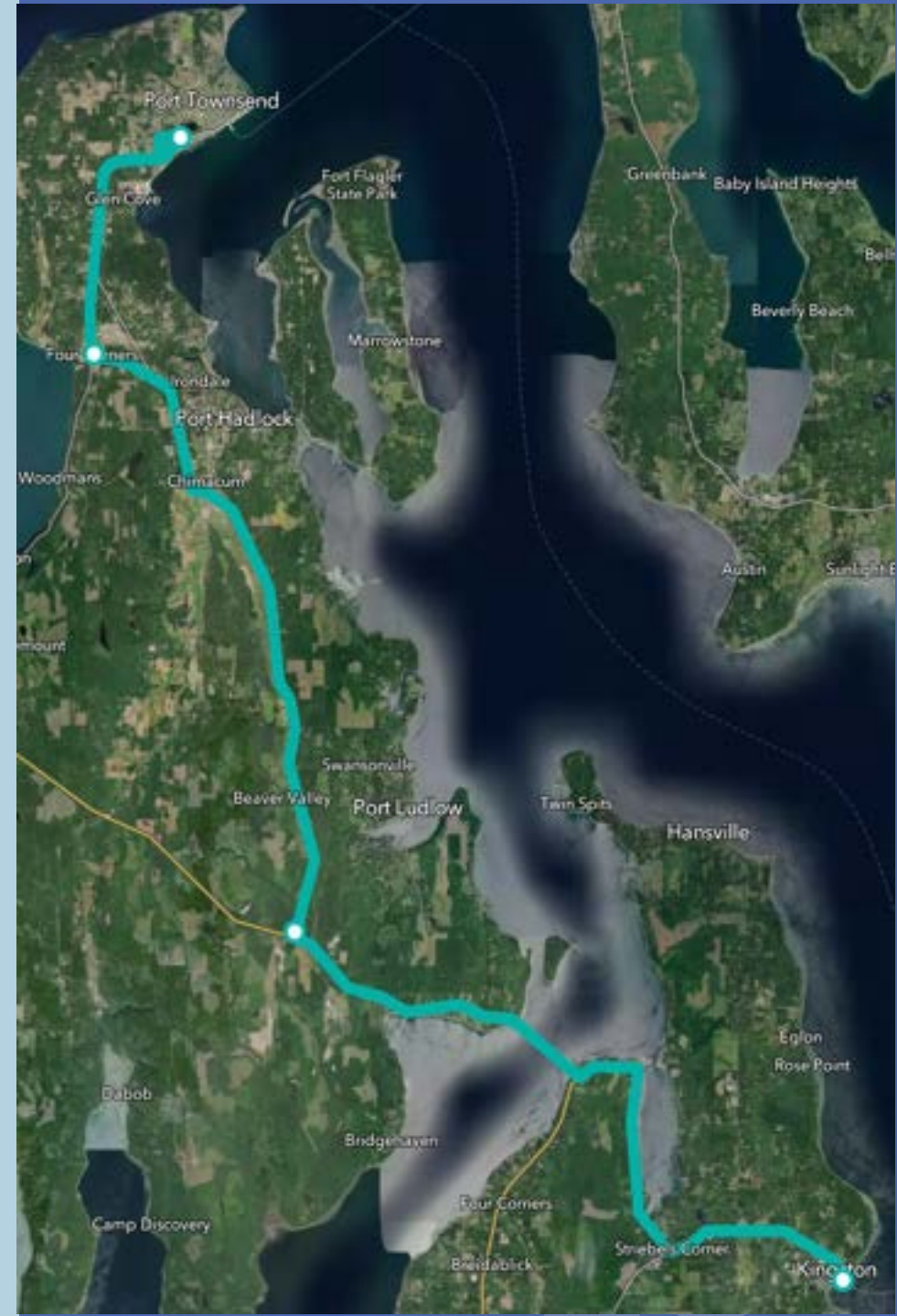
“Jefferson Transit is considering a summer schedule for the #14 Kingston Express on Saturdays to align with Kitsap Transit's Fast Ferry to Seattle. Are you in favor of a Kingston Express summer schedule?”



# #14 Kingston Express Recommended Changes

## Departure Time Change:

- Monday-Friday 7:20 AM, 2:50 PM
- Saturday 8:35 AM, 3:45 PM





## Dial-A-Ride Proposed Change

### Additional Service:

- Kala Point
- Cape George
- Marrowstone Island

### Goal:

- Expand lifeline service

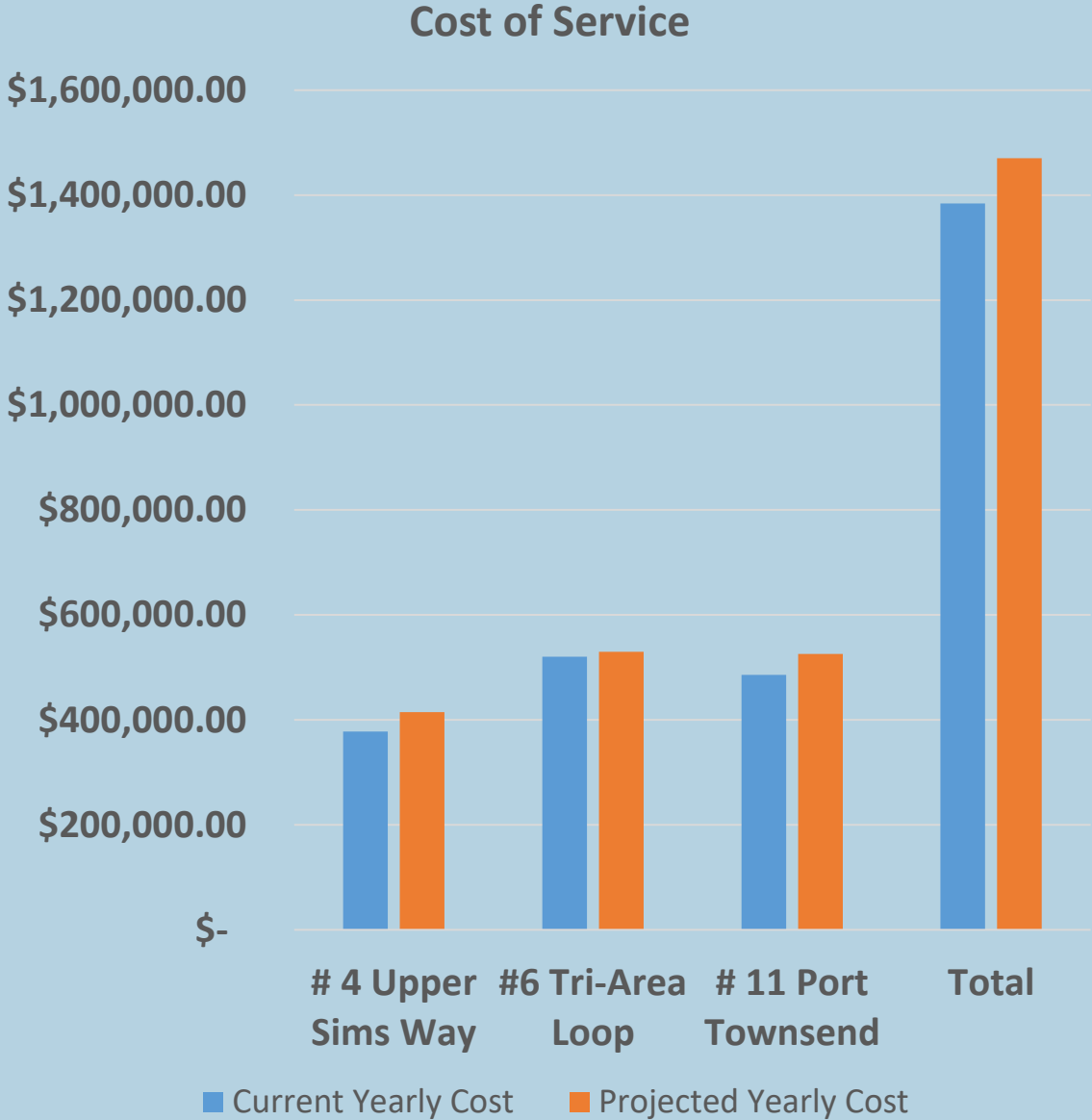


# Dial-A-Ride Survey Results and Recommendations

Service Area	Current	Recommended
Kala Point	Thursday	Tuesday, Thursday
Marrowstone Island	Thursday	Tuesday, Thursday
Cape George	Monday	Monday, Wednesday

# Projected Costs

Route	Current Yearly Cost	Projected Yearly Cost
#4 Upper Sims	\$ 378,007.65	\$ 414,589.04
#6 Tri-Area Loop	\$ 520,299.18	\$ 529,759.17
#11 Port Townsend	\$ 485,799.12	\$ 525,727.82
<b>Total</b>	<b>\$ 1,384,105.96</b>	<b>\$ 1,470,076.03</b>

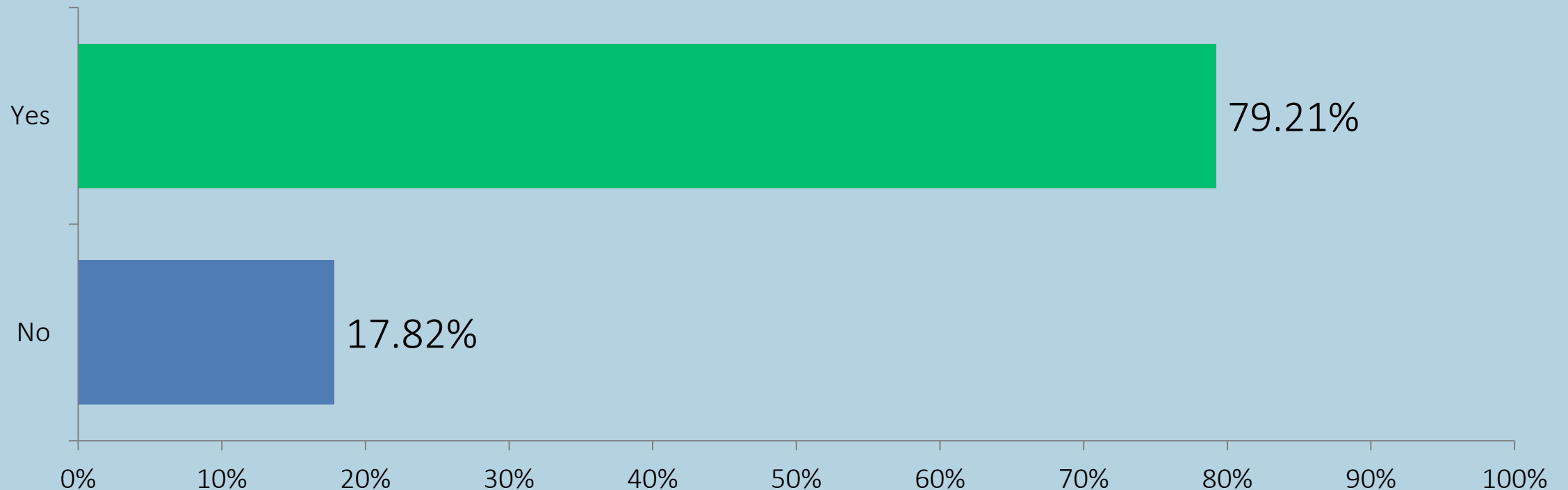




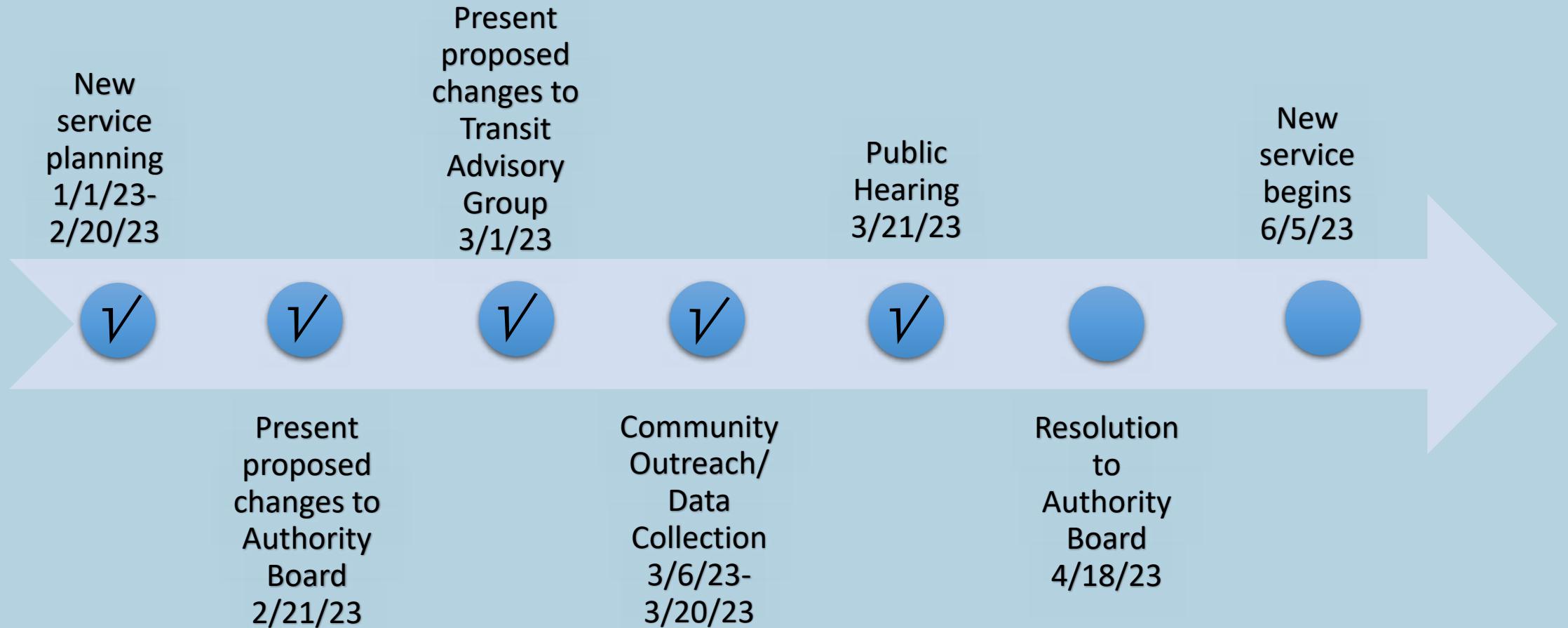
# Proposed Costs Survey Results

Answered: 98 Skipped: 11

“Would you support the additional costs for the service outlined in the presentation?”



# Timeline for Service Change





# Thank You

360-385-4777

[speck@jeffersontransit.com](mailto:speck@jeffersontransit.com)

[Jeffersontransit.com](http://Jeffersontransit.com)